

## Anti-Human CD38 Antibody, Clone HIT2, Alexa Fluor® 488



Scientists Helping Scientists™ | [WWW.STEMCELL.COM](http://WWW.STEMCELL.COM)

TOLL FREE PHONE 1 800 667 0322 • PHONE +1 604 877 0713

[INFO@STEMCELL.COM](mailto:INFO@STEMCELL.COM) • [TECHSUPPORT@STEMCELL.COM](mailto:TECHSUPPORT@STEMCELL.COM)

FOR GLOBAL CONTACT DETAILS VISIT OUR WEBSITE

## Antibodies

Mouse monoclonal IgG1 antibody  
against human, chimpanzee, horse  
CD38, Alexa Fluor® 488-conjugated

Catalog #60014AD  
#60014AD.1

100 tests	5 µL/test
25 tests	5 µL/test

FOR RESEARCH USE ONLY. NOT INTENDED FOR HUMAN OR ANIMAL DIAGNOSTIC OR THERAPEUTIC USES.

## Product Description

The HIT2 antibody reacts with CD38, an ~45 kDa type II transmembrane glycoprotein expressed by many cell types, especially leukocytes. CD38 is an ectoenzyme (ADP-ribosyl hydrolase) with both cyclase and hydrolase activities, whereby it mediates lymphocyte activation, adhesion and metabolism. CD31 is a known ligand for the receptor. In humans, CD38 is expressed by the majority of hematopoietic cells at levels which vary according to the differentiation and activation status of the cells. It is highly expressed on activated T and B cells and plasma cells, and is also found at high levels in several tissues, including brain, kidney, liver, ovary, pancreas, placenta, testis, and some types of cancerous tissue.

Target Antigen Name:	CD38
Alternative Names:	ADP-ribosyl cyclase, T10
Gene ID:	952
Species Reactivity:	Human, Chimpanzee, Horse
Host Species:	Mouse
Clonality:	Monoclonal
Clone:	HIT2
Isotype:	IgG1, kappa
Immunogen:	Human fetal thymocytes
Conjugate:	Alexa Fluor® 488

## Applications

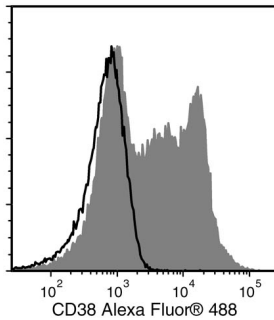
Verified:	FC
Reported:	FC
Special Applications:	This antibody clone has been verified for purity assessments of cells isolated with EasySep™ kits, including EasySep™ Human CD138 Positive Selection Kit (Catalog #18357) and EasySep™ Human Whole Blood CD138 Positive Selection Kit (Catalog #18387).

Abbreviations: CellSep: Cell separation; ChIP: Chromatin immunoprecipitation; FA: Functional assay; FC: Flow cytometry; ICC: Immunocytochemistry; IF: Immunofluorescence microscopy; IHC: Immunohistochemistry; IP: Immunoprecipitation; WB: Western blotting

## Properties

Formulation:	Phosphate-buffered solution, pH 7.2, containing 0.09% sodium azide and 0.2% (w/v) bovine serum albumin
Purification:	The antibody was purified by affinity chromatography and conjugated with Alexa Fluor® 488 under optimal conditions. The solution is free of unconjugated Alexa Fluor® 488.
Stability and Storage:	Product stable at 2 - 8°C when stored undiluted. Do not freeze. Protect product from prolonged exposure to light. For product expiry date, please contact <a href="mailto:techsupport@stemcell.com">techsupport@stemcell.com</a> .
Directions for Use:	For flow cytometry the suggested use of this antibody is 5 µL per 1 x 10 <sup>6</sup> cells in 100 µL volume or per 100 µL of whole blood. It is recommended that the antibody be titrated for optimal performance for each application.

## Data



Flow cytometry analysis of human peripheral blood mononuclear cells (PBMCs) labeled with Anti-Human CD38 Antibody, Clone HIT2, Alexa Fluor® 488 (filled histogram) or a mouse IgG1, kappa Alexa Fluor® 488 isotype control antibody (open histogram).

## Related Products

For a complete list of antibodies, including other conjugates, sizes and clones, as well as related products available from STEMCELL Technologies, please visit our website at [www.stemcell.com/antibodies](http://www.stemcell.com/antibodies) or contact us at [techsupport@stemcell.com](mailto:techsupport@stemcell.com).

## References

1. McMichael AJ, et al. Eds. Leucocyte Typing III: White Cell Differentiation Antigens. Oxford University Press, New York, pp. 417-19, 1987
2. Alessio M, et al. CD38 molecule: structural and biochemical analysis on human T lymphocytes, thymocytes, and plasma cells. *J Immunol* 145(3): 878-84, 1990
3. Mizuguchi M, et al. Neuronal localization of CD38 antigen in the human brain. *Brain Res* 697(1-2): 235-40, 1995
4. Joshua D, et al. The labelling index of primitive plasma cells determines the clinical behaviour of patients with myelomatosis. *Br J Haematol* 94(1): 76-81, 1996
5. van der Voort R, et al. Paracrine regulation of germinal center B cell adhesion through the c-met-hepatocyte growth factor/scatter factor pathway. *J Exp Med* 185(12): 2121-31, 1997 (IHC)
6. Deaglio S, et al. Human CD38 (ADP-ribosyl cyclase) is a counter-receptor of CD31, an Ig superfamily member. *J Immunol* 160(1): 395-402, 1998
7. Horenstein AL, et al. CD38 binding to human myeloid cells is mediated by mouse and human CD31. *Biochem J* 330(Pt 3): 1129-35, 1998
8. Jeannin P, et al. Human effector memory T cells express CD86: a functional role in naive T cell priming. *J Immunol* 162(4): 2044-48, 1999
9. Yoshino N, et al. Upgrading of flow cytometric analysis for absolute counts, cytokines and other antigenic molecules of cynomolgus monkeys (*Macaca fascicularis*) by using anti-human cross-reactive antibodies. *Exp Anim* 49(2): 97-110, 2000 (FC)
10. Bende RJ, et al. Primary follicular lymphoma of the small intestine: alpha4beta7 expression and immunoglobulin configuration suggest an origin from local antigen-experienced B cells. *Am J Pathol* 162(1): 105-13, 2003
11. Lin G, et al. Cross-reactivity of CD antibodies in eight animal species. In: Mason D, et al., Eds. Leucocyte Typing VII. Oxford University Press, Oxford, pp. 519-24, 2002
12. Lehner M, et al. Plasticity of dendritic cell function in response to prostaglandin E2 (PGE2) and interferon-gamma (IFN-gamma). *J Leukoc Biol* 83(4): 883-93, 2008

Copyright © 2013 by STEMCELL Technologies Inc. All rights reserved including graphics and images. STEMCELL Technologies & Design, STEMCELL Shield Design, Scientists Helping Scientists and EasySep are trademarks of STEMCELL Technologies Inc. All other trademarks are the property of their respective holders. Alexa Fluor® is a registered trademark of Life Technologies Corporation. This product is licensed for internal research use only and its sale is expressly conditioned on the buyer not using it for manufacturing, performing a service, or medical test, or otherwise generating revenue. For use other than research, contact Life Technologies Corporation, 5791 Van Allen Way, Carlsbad, CA 92008 USA or [outlicensing@lifetech.com](mailto:outlicensing@lifetech.com).

STEMCELL TECHNOLOGIES INC.'S QUALITY MANAGEMENT SYSTEM IS CERTIFIED TO ISO 13485 MEDICAL DEVICE STANDARDS.