

## Anti-Human CD3 Antibody, Clone UCHT1, FITC



Scientists Helping Scientists™ | [WWW.STEMCELL.COM](http://WWW.STEMCELL.COM)

TOLL FREE PHONE 1 800 667 0322 • PHONE +1 604 877 0713

[INFO@STEMCELL.COM](mailto:INFO@STEMCELL.COM) • [TECHSUPPORT@STEMCELL.COM](mailto:TECHSUPPORT@STEMCELL.COM)

FOR GLOBAL CONTACT DETAILS VISIT OUR WEBSITE

## Antibodies

Mouse monoclonal IgG1 antibody  
against human, chimpanzee CD3, FITC-  
conjugated

Catalog #60011FI  
#60011FI.1

100 tests 5 µL/test  
25 tests 5 µL/test

FOR RESEARCH USE ONLY. NOT INTENDED FOR HUMAN OR ANIMAL DIAGNOSTIC OR THERAPEUTIC USES.

## Product Description

The UCHT1 antibody reacts with the ~20 kDa CD3ε subunit of the human T cell receptor (TCR)/CD3 complex, which is expressed on the surface of ~95% of mature T cells and NK-T cells, and variably on thymocytes. A majority of T cell neoplasms also express CD3. The CD3 complex, which is assembled from combinations of CD3γ, δ, ε, η and ζ subunits, associates non-covalently with the TCR and is involved in transducing antigen recognition signals into the cytoplasm of T cells and in regulating the cell surface expression of the TCR. Activation of T cells by the TCR involves the cytoplasmic tails of the CD3 subunits, which are structurally related type 1 transmembrane proteins and members of the immunoglobulin super family. Mutations in the CD3 subunits have been associated with various immunodeficiency disorders including severe combined immunodeficiency disorder (SCID).

Target Antigen Name:	CD3
Alternative Names:	CD3e, CD3epsilon, T3
Gene ID:	915
Species Reactivity:	Human, Chimpanzee
Host Species:	Mouse (BALB/c)
Clonality:	Monoclonal
Clone:	UCHT1
Isotype:	IgG1, kappa
Immunogen:	Human infant thymocytes followed by Sézary T cells
Conjugate:	FITC

## Applications

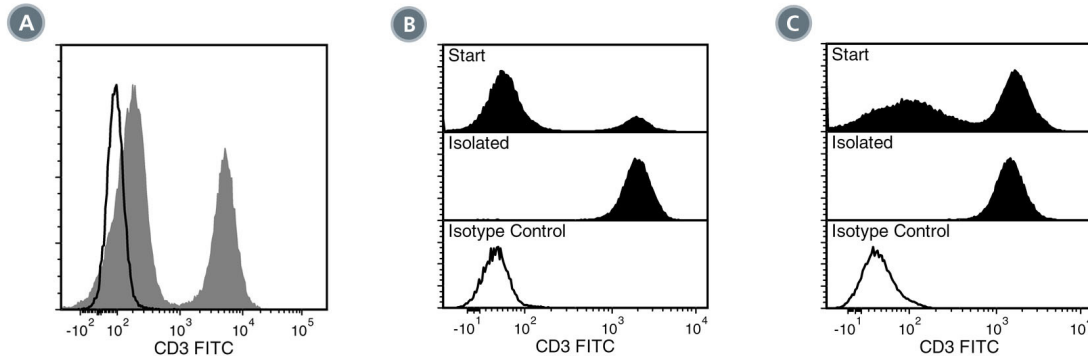
Verified:	FC
Reported:	FC
Special Applications:	This antibody clone has been verified for purity assessments of cells isolated with EasySep™ kits, including EasySep™ HLA Whole Blood T Cell Enrichment Kit (Catalog #19951HLA), EasySep™ HLA Whole Blood CD3 Positive Selection Kit (Catalog #18081HLA; partial blocking may be observed) and EasySep™ HLA Whole Blood CD2 Positive Selection Kit (Catalog #18687HLA).

Abbreviations: CellSep: Cell separation; ChIP: Chromatin immunoprecipitation; FA: Functional assay; FC: Flow cytometry; ICC: Immunocytochemistry; IF: Immunofluorescence microscopy; IHC: Immunohistochemistry; IP: Immunoprecipitation; WB: Western blotting

## Properties

Formulation:	Phosphate-buffered solution, pH 7.2, containing 0.09% sodium azide and 0.2% (w/v) bovine serum albumin
Purification:	The antibody was purified by affinity chromatography and conjugated with FITC under optimal conditions. The solution is free of unconjugated FITC.
Stability and Storage:	Product stable at 2 - 8°C when stored undiluted. Do not freeze. Protect product from prolonged exposure to light. For product expiry date, please contact <a href="mailto:techsupport@stemcell.com">techsupport@stemcell.com</a> .
Directions for Use:	For flow cytometry the suggested use of this antibody is 5 µL per 1 x 10 <sup>6</sup> cells in 100 µL volume or per 100 µL of whole blood. It is recommended that the antibody be titrated for optimal performance for each application.

## Data



(A) Flow cytometry analysis of human peripheral blood mononuclear cells (PBMCs) labeled with Anti-Human CD3 Antibody, Clone UCHT1, FITC (filled histogram) or a mouse IgG1, kappa FITC isotype control antibody (black line histogram).

(B) Flow cytometry analysis of human whole blood nucleated cells processed with the EasySep™ HLA Whole Blood T Cell Enrichment Kit and labeled with Anti-Human CD3 Antibody, Clone UCHT1, FITC. Histograms show labeling of HetaSep™-treated whole blood cells (Start) and isolated cells (Isolated). Labeling of start cells with a mouse IgG1, kappa FITC isotype control antibody is shown (open histogram).

(C) Flow cytometry analysis of human buffy coat nucleated cells processed with the EasySep™ HLA Whole Blood CD3 Positive Selection Kit and labeled with Anti-Human CD3 Antibody, Clone UCHT1, FITC. Histograms show labeling of buffy coat nucleated cells (Start) and isolated cells (Isolated). Labeling of start cells with a mouse IgG1, kappa FITC isotype control antibody is shown (open histogram).

## Related Products

For a complete list of antibodies, including other conjugates, sizes and clones, as well as related products available from STEMCELL Technologies, please visit our website at [www.stemcell.com/antibodies](http://www.stemcell.com/antibodies) or contact us at [techsupport@stemcell.com](mailto:techsupport@stemcell.com).

## References

1. Beverley PC, Callard RE. Distinctive functional characteristics of human "T" lymphocytes defined by E rosetting or a monoclonal anti-T cell antibody. *Eur J Immunol* 11(4): 329-34, 1981
2. McMichael AJ, et al. Eds. *Leucocyte Typing III: White Cell Differentiation Antigens*. Oxford University Press, New York, pp. 417-19, 1987
3. Van Dongen JJM, et al. Cytoplasmic expression of the CD3 antigen as a diagnostic marker for immature T-cell malignancies. *Blood* 71(3): 603-12, 1988 (WB)
4. Graves J, Cantrel DA. An analysis of the role of guanine nucleotide binding proteins in antigen receptor/CD3 antigen coupling to phospholipase C. *J Immunol* 146(7): 2102-27, 1991 (FA)
5. Salmeron A, et al. A conformational epitope expressed upon association of CD3-epsilon with either CD3-delta or CD3-gamma is the main target for recognition by anti-CD3 monoclonal antibodies. *J Immunol* 147(9): 3047-52, 1991 (IP)
6. Yoshino N, et al. Upgrading of flow cytometric analysis for absolute counts, cytokines and other antigenic molecules of cynomolgus monkeys (*Macaca fascicularis*) by using anti-human cross-reactive antibodies. *Exp Anim* 49(2): 97-110, 2000 (FC)
7. Ryschich E, et al. Expression of HLA class I/II antigens and T cell immune response in human neuroendocrine tumors of the pancreas. *Tissue Antigens* 62(1): 48-54, 2003 (IHC)
8. Arnett KL et al. Crystal structure of a human CD3-epsilon/delta dimer in complex with a UCHT1 single-chain antibody fragment. *Proc Natl Acad Sci USA* 101(46): 16268-73, 2004
9. Thompson AG, et al. T cells signaled by NF-kappa B- dendritic cells are sensitized not anergic to subsequent activation. *J Immunol* 173(3): 1671-80, 2004 (FA)
10. Thakral D, et al. Differential expression of the human CD8beta splice variants and regulation of the M-2 isoform by ubiquitination. *J Immunol* 180(11): 7431-42, 2008 (FC)

Copyright © 2013 by STEMCELL Technologies Inc. All rights reserved including graphics and images. STEMCELL Technologies & Design, STEMCELL Shield Design, Scientists Helping Scientists and EasySep are trademarks of STEMCELL Technologies Inc. All other trademarks are the property of their respective holders. Alexa Fluor® is a registered trademark of Life Technologies Corporation. This product is licensed for internal research use only and its sale is expressly conditioned on the buyer not using it for manufacturing, performing a service, or medical test, or otherwise generating revenue. For use other than research, contact Life Technologies Corporation, 5791 Van Allen Way, Carlsbad, CA 92008 USA or [outlicensing@lifetech.com](mailto:outlicensing@lifetech.com).

STEMCELL TECHNOLOGIES INC.'S QUALITY MANAGEMENT SYSTEM IS CERTIFIED TO ISO 13485 MEDICAL DEVICE STANDARDS.