

Anti-Human CD34 Antibody, Clone 581, FITC



Scientists Helping Scientists™ | WWW.STEMCELL.COM

TOLL FREE PHONE 1 800 667 0322 • PHONE +1 604 877 0713

INFO@STEMCELL.COM • TECHSUPPORT@STEMCELL.COM

FOR GLOBAL CONTACT DETAILS VISIT OUR WEBSITE

Antibodies

Mouse monoclonal IgG1 antibody
against human CD34, FITC-conjugated

Catalog #60013FI
#60013FI.1

100 Tests 5 µL/test
25 Tests 5 µL/test

Product Description

The 581 antibody reacts with human CD34, an ~105 - 120 kDa type 1 transmembrane glycoprotein expressed on the surface of most human hematopoietic stem and progenitor cells (HSPCs) as well as on mesenchymal stem cells, embryonic fibroblasts, endothelial cells, neurons, and some tumor cell lines. CD34 is expressed only transiently during hematopoiesis, so the frequency of CD34+ cells is low in bone marrow or cord blood (~1 - 5%) and very low (~0.1 - 0.5%) in peripheral blood. CD34 is a marker used to identify and isolate HSPCs capable of cell engraftment. CD34 is thought to mediate attachment of stem cells to the bone marrow extracellular matrix or directly to stromal cells during early hematopoiesis, and to be involved in lymphocyte recruitment through binding to the ligands L- and E-selectin. Distinct epitope groups have been assigned to CD34 based on their sensitivity to enzymatic cleavage, with the 581 antibody recognizing a class III epitope (resistant to neuraminidase and O-glycoprotease).

Target Antigen Name:	CD34
Alternative Names:	Gp105-120, My10
Gene ID:	947
Species Reactivity:	Human
Host Species:	Mouse
Clonality:	Monoclonal
Clone:	581
Isotype:	IgG1, kappa
Immunogen:	Human CD34+ leukemic cells
Conjugate:	FITC

Applications

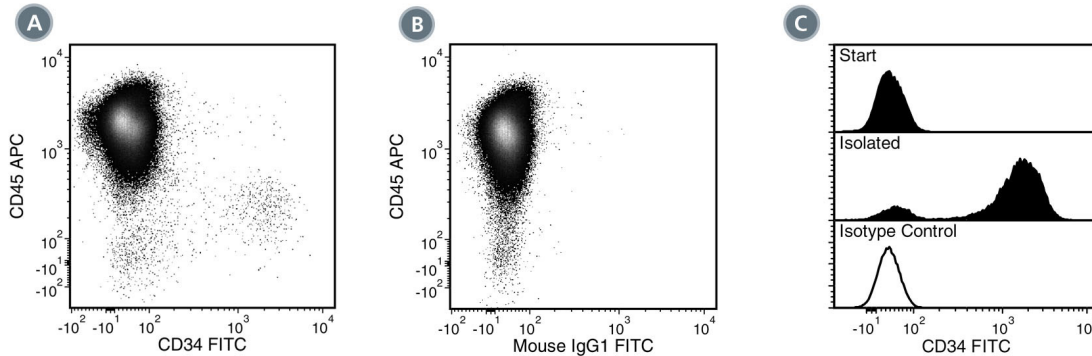
Verified:	FC
Reported:	FC
Special Applications:	This antibody clone has been verified for purity assessments of cells isolated with EasySep™ kits, including EasySep™ Human CD34 Positive Selection Kit (Catalog #18056) and EasySep™ Human Whole Blood CD34 Positive Selection Kit (Catalog #18086), and for labeling human mesenchymal cells grown in MesenCult™ Proliferation Kit (Human; Catalog #05411).

Abbreviations: CellSep: Cell separation; ChIP: Chromatin immunoprecipitation; FA: Functional assay; FC: Flow cytometry; ICC: Immunocytochemistry; IF: Immunofluorescence microscopy; IHC: Immunohistochemistry; IP: Immunoprecipitation; RIA: Radioimmunoassay; WB: Western blotting

Properties

Formulation:	Phosphate-buffered solution, pH 7.2, containing 0.09% sodium azide and 0.2% (w/v) bovine serum albumin
Purification:	The antibody was purified by affinity chromatography and conjugated with FITC under optimal conditions. The solution is free of unconjugated FITC.
Stability and Storage:	Product stable at 2 - 8°C when stored undiluted. Do not freeze. Protect product from prolonged exposure to light. For product expiry date, please contact techsupport@stemcell.com .
Directions for Use:	For flow cytometry the suggested use of this antibody is 5 µL per 1 x 10 ⁶ cells in 100 µL volume or per 100 µL of whole blood. It is recommended that the antibody be titrated for optimal performance for each application.

Data



(A) Flow cytometry analysis of human peripheral blood mononuclear cells (PBMCs) labeled with Anti-Human CD34 Antibody, Clone 581, FITC and Anti-Human CD45 Antibody, Clone HI30, APC (Catalog #60018AZ).

(B) Flow cytometry analysis of human PBMCs labeled with a mouse IgG1, kappa FITC isotype control antibody and Anti-Human CD45 Antibody, Clone HI30, APC.

(C) Flow cytometry analysis of human PBMCs processed with the EasySep™ Human CD34 Positive Selection Kit and labeled with Anti-Human CD34 Antibody, Clone 581, FITC. Histograms show labeling of PBMCs (Start) and isolated cells (Isolated). Labeling of start cells with a mouse IgG1, kappa FITC isotype control antibody is shown (solid line histogram).

Related Products

For a complete list of antibodies, including other conjugates, sizes and clones, as well as related products available from STEMCELL Technologies, please visit our website at www.stemcell.com/antibodies or contact us at techsupport@stemcell.com.

References

1. Maumus M et al. (2011) Native human adipose stromal cells: localization, morphology and phenotype. *Int J Obes (Lond)* 35(9): 1141–53. (FC, ICC, IHC)
2. Joseph A et al. (2003) Expression of CD34 and L-selectin on human corneal keratocytes. *Invest Ophthalmol Vis Sci* 44(11): 4689–9. (IHC)
3. Yoshino N et al. (2000) Upgrading of flow cytometric analysis for absolute counts, cytokines and other antigenic molecules of cynomolgus monkeys (*Macaca fascicularis*) by using anti-human cross-reactive antibodies. *Exp Anim* 49(2): 97–110. (FC)
4. Steen R & Egeland T. (1998) CD34 molecule epitope distribution on cells of haematopoietic origin. *Leuk Lymphoma* 30(1-2): 23–30.
5. Rudin CE et al. (1997) Concordant expression of class II and class III CD34 epitopes on haematopoietic cells in leukapheresis and cord blood samples with CD45/CD34 dual staining. *Br J Haematol* 97(2): 488–91. (FC)
6. Schlossman SF et al. (Eds.). (1995) *Leucocyte Typing V: White cell differentiation antigens* (pp. 840–6). New York: Oxford University Press.
7. Andrews RG et al. (1992) CD34+ marrow cells, devoid of T and B lymphocytes, reconstitute stable lymphopoiesis and myelopoiesis in lethally irradiated allogeneic baboons. *Blood* 80(7): 1693–701. (FC, IF)
8. Terstappen LW et al. (1991) Sequential generations of hematopoietic colonies derived from single nonlineage-committed CD34+CD38- progenitor cells. *Blood* 77(6): 1218–27. (FC)
9. Strauss LC et al. (1986) Antigenic analysis of hematopoiesis. V. Characterization of My-10 antigen expression by normal lymphohematopoietic progenitor cells. *Exp Hematol* 14(9): 878–86.
10. Civin CI et al. (1984) Antigenic analysis of hematopoiesis. III. A hematopoietic progenitor cell surface antigen defined by a monoclonal antibody raised against KG-1a cells. *J Immunol* 133(1): 157–65.

STEMCELL TECHNOLOGIES INC.'S QUALITY MANAGEMENT SYSTEM IS CERTIFIED TO ISO 13485. PRODUCTS ARE FOR RESEARCH USE ONLY AND NOT INTENDED FOR HUMAN OR ANIMAL DIAGNOSTIC OR THERAPEUTIC USES UNLESS OTHERWISE STATED.

Copyright © 2016 by STEMCELL Technologies Inc. All rights reserved including graphics and images. STEMCELL Technologies & Design, STEMCELL Shield Design, Scientists Helping Scientists, EasySep and MesenCult are trademarks of STEMCELL Technologies Inc. All other trademarks are the property of their respective holders. Alexa Fluor® is a registered trademark of Life Technologies Corporation. This product is licensed for internal research use only and its sale is expressly conditioned on the buyer not using it for manufacturing, performing a service, or medical test, or otherwise generating revenue. For use other than research, contact Life Technologies Corporation, 5791 Van Allen Way, Carlsbad, CA 92008 USA or outlicensing@lifetech.com. While STEMCELL has made all reasonable efforts to ensure that the information provided by STEMCELL and its suppliers is correct, it makes no warranties or representations as to the accuracy or completeness of such information.