



EasySep™ Human EpCAM Positive Selection Kit

Positive Selection

Catalog #18356

For processing 1 x 10⁹ cells



Scientists Helping Scientists™ | WWW.STEMCELL.COM

TOLL FREE PHONE 1 800 667 0322 • PHONE +1 604 877 0713

INFO@STEMCELL.COM • TECHSUPPORT@STEMCELL.COM

FOR GLOBAL CONTACT DETAILS VISIT OUR WEBSITE

Document #28860 | Version 3_1_5

Description

Isolate highly purified EpCAM+ cells from fresh or previously frozen cultured human mammary epithelial cells or other dissociated tissue samples by immunomagnetic positive selection.

- Fast and easy-to-use
- Up to 94% purity
- No columns required

This kit targets EpCAM+ cells for positive selection with an antibody recognizing the EpCAM surface marker. Desired cells are labeled with antibodies and magnetic particles, and separated without columns using an EasySep™ magnet. Unwanted cells are simply poured off, while desired cells remain in the tube. Isolated cells are immediately available for downstream applications such as flow cytometry, culture, or DNA/RNA extraction.

Component Descriptions

COMPONENT NAME	COMPONENT #	QUANTITY	STORAGE	SHELF LIFE	FORMAT
EasySep™ Human EpCAM Positive Selection Cocktail	18356C.2	1 x 1 mL	Store at 2 - 8°C. Do not freeze.	Stable until expiry date (EXP) on label.	A combination of monoclonal antibodies in PBS. Includes an Fc receptor blocking antibody.
EasySep™ Magnetic Nanoparticles Positive Selection	18150	1 x 1 mL	Store at 2 - 8°C. Do not freeze.	Stable until expiry date (EXP) on label.	A suspension of magnetic particles in water.

PBS - phosphate-buffered saline

Components may be shipped at room temperature (15 - 25°C) but should be stored as indicated above.

Sample Preparation

Cells must be in a single-cell suspension in order to use this kit. The protocol below has been optimized for generating a single-cell suspension from collagenase-dissociated human mammary tissue, but it may be used with a variety of other tissues. Refer to the Product Information Sheet for Collagenase/Hyaluronidase (Document #29634) for a protocol for dissociation of human mammary tissue.

GENERATION OF A SINGLE-CELL SUSPENSION

1. Add 5 mL of pre-warmed Trypsin-EDTA (0.25%; Catalog #07901) to the previously dissociated tissue such that the cells are well suspended, and gently pipette up and down with a 1 mL pipette tip for 1 - 3 minutes. The sample should become very viscous due to lysis of dead cells and the release of DNA.
2. Add 10 mL of cold (2 - 8 °C) recommended medium and centrifuge at 450 x g for 5 minutes.
3. Remove as much of the supernatant as possible. The cells may be a viscous mass floating in the recommended medium.
4. Add 2 - 5 mL of pre-warmed Dispase (5 U/mL; Catalog #07913) and 200 µL of DNase I Solution (1 mg/mL; Catalog #07900), and pipette the sample for 1 - 2 minutes. The sample should now be cloudy, but not viscous. If it is still viscous, add more DNase I Solution.
5. Dilute the cell suspension with 10 mL of cold recommended medium and filter through a 40 µm Cell Strainer (Catalog #27305) into a new 50 mL conical tube (e.g. Catalog #38010) and centrifuge at 450 x g for 5 minutes.
6. Keep cells on ice until ready for use.



Recommended Medium

HBSS with 10mM HEPES, Without Phenol Red (Catalog #37150) containing 2% fetal bovine serum (FBS).

Directions for Use – Manual EasySep™ Protocols

See page 1 for Sample Preparation and Recommended Medium. Refer to Table 1 for detailed instructions regarding the EasySep™ procedure for each magnet.

Table 1. EasySep™ Human EpCAM Positive Selection Kit Protocol

		EASYSEP™ MAGNETS	
STEP	INSTRUCTIONS	 EasySep™ (Catalog #18000)	 “The Big Easy” (Catalog #18001)
1	Prepare sample at the indicated cell concentration within the volume range.	1 x 10 ⁸ cells/mL 0.1 - 2 mL* NOTE: If starting with fewer than 1 x 10 ⁷ cells, resuspend cells in 0.1 mL	1 x 10 ⁸ cells/mL 0.25 - 8.5 mL* NOTE: If starting with fewer than 2.5 x 10 ⁷ cells, resuspend cells in 0.25 mL
	Add sample to required tube.	5 mL (12 x 75 mm) polystyrene round-bottom tube (e.g. Catalog #38007)	14 mL (17 x 95 mm) polystyrene round-bottom tube (e.g. Catalog #38008)
2	Add Selection Cocktail to sample.	100 µL/mL of sample	100 µL/mL of sample
	Mix and incubate.	2 - 8°C for 20 minutes	2 - 8°C for 20 minutes
3	Mix Magnetic Particles. NOTE: Particles should appear evenly dispersed.	Pipette up and down more than 5 times	Pipette up and down more than 5 times
4	Add Magnetic Particles to sample.	50 µL/mL of sample	50 µL/mL of sample
	Mix and incubate.	2 - 8°C for 15 minutes	2 - 8°C for 15 minutes
5	Add cold recommended medium to top up the sample to the indicated volume. Mix by gently pipetting up and down 2 - 3 times.	Top up to 2.5 mL	<ul style="list-style-type: none"> • Top up to 5 mL for samples < 1 mL • Top up to 10 mL for samples ≥ 1 mL
	Place the tube (without lid) into the magnet and incubate.	RT for 5 minutes	RT for 5 minutes
6	Pick up the magnet, and in one continuous motion invert the magnet and tube,** pouring off the supernatant. Remove the tube from the magnet; this tube contains the isolated cells.	Discard supernatant	Discard supernatant
7	Repeat steps as indicated.	Steps 5 and 6, three more times (total of 4 x 5-minute separations)	Steps 5 and 6, three more times (total of 4 x 5-minute separations)
8	Resuspend cells in desired medium. Be sure to collect cells from the sides of the tube.	Isolated cells are ready for use	Isolated cells are ready for use

RT - room temperature (15 - 25°C)


* To minimize cell clumping, use cold buffers and keep cells on ice as much as possible. If sample begins to clump, add DNase I Solution (1mg/mL).

** Leave the magnet and tube inverted for 2 - 3 seconds, then return upright. Do not shake or blot off any drops that may remain hanging from the mouth of the tube.

Directions for Use – Fully Automated RoboSep™ Protocol

See page 1 for Sample Preparation and Recommended Medium. Refer to Table 2 for detailed instructions regarding the RoboSep™ procedure.

Table 2. RoboSep™ Human EpCAM Positive Selection Kit Protocol

STEP	INSTRUCTIONS	RoboSep™ (Catalog #20000 and #21000)	
1	Prepare sample at the indicated cell concentration within the volume range.	1 x 10 ⁸ cells/mL 0.25 - 8.5 mL NOTE: If starting with fewer than 2.5 x 10 ⁷ cells, resuspend cells in 0.25 mL	
	Add sample to required tube.	14 mL (17 x 95 mm) polystyrene round-bottom tube (e.g. Catalog #38008)	
2	Select protocol.	<ul style="list-style-type: none"> Human EpCAM Positive Selection 18356-high purity Human EpCAM Positive Selection 18356-high recovery 	
3	Mix Magnetic Particles. NOTE: Particles should appear evenly dispersed.	Pipette up and down more than 5 times	
4	Load the carousel.	Follow on-screen prompts	
	Start the protocol.	Press the green "Run" button	
5	Unload the carousel when the run is complete. Remove the tube containing the isolated cells and resuspend in desired medium. Be sure to collect cells from the sides of the tube.	Isolated cells are ready for use	

Notes and Tips

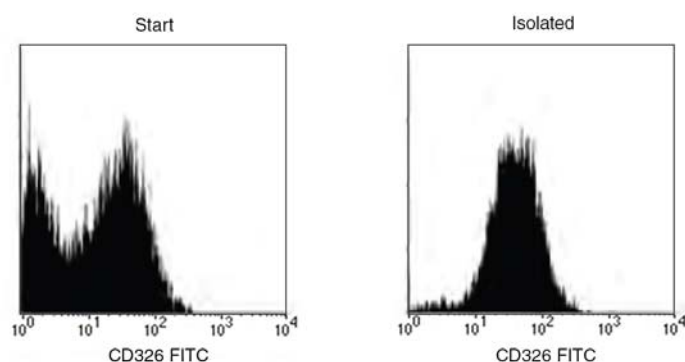
ASSESSING PURITY

For purity assessment by flow cytometry use the following fluorochrome-conjugated antibody clone:

- Anti-Human CD326 (EpCAM) Antibody, Clone 5E11.3.1 (Catalog #60147)

NOTE: The 5E11 epitope has an identical distribution as EpCAM.

Data



Starting with cultured mammary tissue, the EpCAM+ cell content (CD326+) of the isolated fraction typically is ranges 93 ± 1%. In the above example, the purities of the start and final isolated fractions are 49.5% and 94.6%, respectively.

STEMCELL TECHNOLOGIES INC.'S QUALITY MANAGEMENT SYSTEM IS CERTIFIED TO ISO 13485. PRODUCTS ARE FOR RESEARCH USE ONLY AND NOT INTENDED FOR HUMAN OR ANIMAL DIAGNOSTIC OR THERAPEUTIC USES UNLESS OTHERWISE STATED.

Copyright © 2017 by STEMCELL Technologies Inc. All rights reserved including graphics and images. STEMCELL Technologies & Design, STEMCELL Shield Design, Scientists Helping Scientists, EasySep, and RoboSep are trademarks of STEMCELL Technologies Canada Inc. All other trademarks are the property of their respective holders. While STEMCELL has made all reasonable efforts to ensure that the information provided by STEMCELL and its suppliers is correct, it makes no warranties or representations as to the accuracy or completeness of such information.