



Positive Selection
Catalog #18083

EasySep™ Human Whole Blood CD8 Positive Selection Kit

For processing 60 mL whole blood



Scientists Helping Scientists™ | WWW.STEMCELL.COM

TOLL FREE PHONE 1 800 667 0322 • PHONE +1 604 877 0713
INFO@STEMCELL.COM • TECHSUPPORT@STEMCELL.COM
FOR GLOBAL CONTACT DETAILS VISIT OUR WEBSITE

Document #28950 | Version 1_2_3

Description

Isolate highly purified CD8+ cells from fresh human whole blood samples by immunomagnetic positive selection.

- Fast and easy-to-use
- Up to 99% purity
- No columns required

This kit targets CD8+ cells for positive selection with an antibody recognizing the CD8 surface marker. Desired cells are labeled with antibodies and magnetic particles, and separated without columns using an EasySep™ magnet. Unwanted cells are simply poured off, while desired cells remain in the tube. Isolated cells are immediately available for downstream applications such as flow cytometry, culture, or DNA/RNA extraction.

Component Descriptions

COMPONENT NAME	COMPONENT #	QUANTITY	STORAGE	SHELF LIFE	FORMAT
EasySep™ Human Whole Blood CD8 Positive Selection Cocktail	18083C.1	3 x 1 mL	Store at 2 - 8°C. Do not freeze.	Stable until expiry date (EXP) on label.	A combination of monoclonal antibodies in PBS. Includes an Fc receptor blocking antibody.
EasySep™ Magnetic Nanoparticles Positive Selection	18150	3 x 1 mL	Store at 2 - 8°C. Do not freeze.	Stable until expiry date (EXP) on label.	A suspension of magnetic particles in water.
EasySep™ Red Blood Cell Lysis Buffer, 10X Concentrate	20110	1 x 10 mL	Store at 15 - 25°C.	Stable until expiry date (EXP) on label.	A 10X concentrated red blood cell lysis reagent.

PBS - phosphate-buffered saline

Components may be shipped at room temperature (15 - 25°C) but should be stored as indicated above.

Additional Reagent Stability Information

REAGENT NAME	STORAGE	SHELF LIFE
EasySep™ Red Blood Cell Lysis Buffer (1X dilution)	Store at 2 - 8°C. Do not freeze.	Stable for up to 3 months. Do not exceed the expiry date (EXP) of the original component.

Sample Preparation

For available fresh and frozen samples, see www.stemcell.com/primarycells.

PERIPHERAL BLOOD

Collect whole blood in a blood collection tube containing anticoagulant.


Recommended Medium

EasySep™ Buffer (Catalog #20144), RoboSep™ Buffer (Catalog #20104), or PBS containing 2% fetal bovine serum (FBS) and 1 mM EDTA. Medium should be free of Ca++ and Mg++.

Directions for Use – Manual EasySep™ Protocols

See page 1 for Sample Preparation and Recommended Medium. Refer to Table 1 for detailed instructions regarding the EasySep™ procedure.

Table 1. EasySep™ Human Whole Blood CD8 Positive Selection Kit Protocol

		EASYSEP™ MAGNET	
STEP	INSTRUCTIONS	“The Big Easy” (Catalog #18001)	
1	Prepare sample within the volume range.	Up to 4.5 mL	
	Add sample to required tube.	14 mL (17 x 100 mm) polystyrene round-bottom tube (e.g. Corning Catalog #352057)	
2	Add 1X EasySep™ RBC Lysis Buffer to sample.	Equal volume to sample	
3	Add Selection Cocktail to sample.	25 µL/mL of diluted sample	
	Mix and incubate.	RT for 15 minutes	
4	Mix Magnetic Particles. NOTE: Particles should appear evenly dispersed.	Pipette up and down more than 5 times	
5	Add Magnetic Particles to sample.	25 µL/mL of diluted sample	
	Mix and incubate.	RT for 10 minutes	
6	Add recommended medium to top up the sample to the indicated volume. Mix by gently pipetting up and down 2 - 3 times.	<ul style="list-style-type: none"> • Top up to 5 mL for samples < 2.5 mL • Top up to 10 mL for samples ≥ 2.5 mL 	
	Place the tube (without lid) into the magnet and incubate.	RT for 5 minutes	
7	Pick up the magnet, and in one continuous motion invert the magnet and tube,* pouring off the supernatant. Remove the tube from the magnet; this tube contains the isolated cells.	Discard supernatant	
8	Repeat steps as indicated.	Steps 6 and 7, two more times (total of 3 x 5-minute separations)	
9	Resuspend cells in desired medium. Be sure to collect cells from the sides of the tube.	Isolated cells are ready for use	


RT - room temperature (15 - 25°C)

* Leave the magnet and tube inverted for 2 - 3 seconds, then return upright. Do not shake or blot off any drops that may remain hanging from the mouth of the tube.

Directions for Use – Fully Automated RoboSep™ Protocol

See page 1 for Sample Preparation and Recommended Medium. Refer to Table 2 for detailed instructions regarding the RoboSep™ procedure.

Table 2. RoboSep™ Human Whole Blood CD8 Positive Selection Kit Protocol

STEP	INSTRUCTIONS	RoboSep™ (Catalog #20000 and #21000)	
1	Prepare sample within the volume range.	0.25 - 4.5 mL	
	Add sample to required tube.	14 mL (17 x 100 mm) polystyrene round-bottom tube (e.g. Corning Catalog #352057)	
2	Add 1X EasySep™ RBC Lysis Buffer to sample.	Equal volume to sample	
3	Select protocol.	Human CD8 WB Positive Selection 18083-high purity	
4	Mix Magnetic Particles. NOTE: Particles should appear evenly dispersed.	Pipette up and down more than 5 times	
5	Load the carousel.	Follow on-screen prompts	
	Start the protocol.	Press the green "Run" button	
6	Unload the carousel when the run is complete. Remove the tube containing the isolated cells and resuspend in desired medium. Be sure to collect cells from the sides of the tube.	Isolated cells are ready for use	

Notes and Tips

EASYSEP™ RED BLOOD CELL LYSIS BUFFER

EasySep™ Red Blood Cell Lysis Buffer is supplied as a 10X concentrate. Prepare 1X lysis buffer at least 1 hour before use by adding 1 part 10X lysis buffer to 9 parts distilled or Type 1 water. Mix gently and completely before use.

ASSESSING PURITY

For purity assessment of CD8+ cells by flow cytometry use one of the following fluorochrome-conjugated antibody clones:

- Anti-Human CD8a Antibody, Clone RPA-T8 (Catalog #60022), HIT8a, B9.11, or
- Anti-Human CD8a Antibody, Clone SK1 (Catalog #60125), or LT8 (partially blocked)

One of the following methods can also be used:

- Use alternative markers such as fluorochrome-conjugated Anti-Human CD3 Antibody, Clone UCHT1 (Catalog #60011) and Anti-Human CD4 Antibody, Clone OKT4 (Catalog #60016) to detect CD3+CD4- cells.
- Use a fluorochrome-conjugated secondary antibody, such as Goat Anti-Mouse IgG (H+L) Antibody, Polyclonal (Catalog #60138).

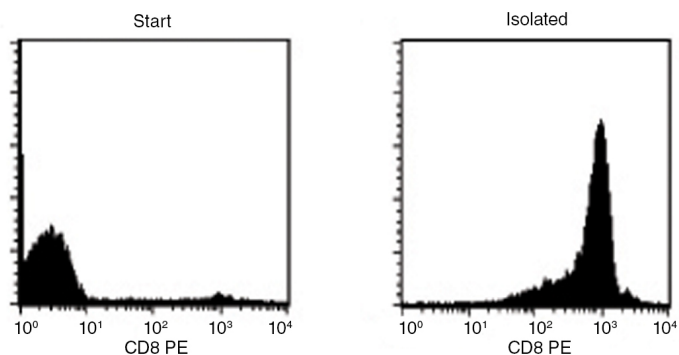
DONOR VARIABILITY

Certain donors express one or more soluble serum factors that can cause cross-linking with magnetic particles. This may result in visible aggregates in the enriched cell fraction following positive selection. These aggregates may appear as a distinct, high side-scatter population on FSC vs. SSC plots during flow cytometry analysis of the enriched fraction. This population consists solely of particles, with no cells or platelets present, as determined by staining with fluorescently-labeled antibodies against dextran, CD41, and CD45.

Potential aggregation can be avoided by washing away the donor plasma. Dilute the sample 2-fold in the recommended medium, and centrifuge at 300 x g for 10 minutes. Remove as much plasma as possible without disturbing the white and red blood cells, then resuspend the sample to the original volume with recommended medium before beginning the separation procedure.

If the samples have not been washed, any aggregates can be gated out during flow cytometry analysis of the enriched fraction based on their FSC vs. SSC characteristics, or by their lack of CD45 expression.

Data



Starting with fresh whole blood, the CD8+ cell content of the isolated fraction typically ranges from 97.1 - 99.7%. In the above example, the purities of the start and final isolated fractions are 6.2% and 99.4%, respectively.

STEMCELL TECHNOLOGIES INC.'S QUALITY MANAGEMENT SYSTEM IS CERTIFIED TO ISO 13485. PRODUCTS ARE FOR RESEARCH USE ONLY AND NOT INTENDED FOR HUMAN OR ANIMAL DIAGNOSTIC OR THERAPEUTIC USES UNLESS OTHERWISE STATED.

Copyright © 2017 by STEMCELL Technologies Inc. All rights reserved including graphics and images. STEMCELL Technologies & Design, STEMCELL Shield Design, Scientists Helping Scientists, EasySep, and RoboSep are trademarks of STEMCELL Technologies Canada Inc. All other trademarks are the property of their respective holders. While STEMCELL has made all reasonable efforts to ensure that the information provided by STEMCELL and its suppliers is correct, it makes no warranties or representations as to the accuracy or completeness of such information.