



Positive Selection

Catalog #18684HLA

EasySep™ HLA Whole Blood Lymphoid Positive Selection Kit

For processing 60 mL buffy coat or whole blood



Scientists Helping Scientists™ | WWW.STEMCELL.COM

TOLL FREE PHONE 1 800 667 0322 • PHONE +1 604 877 0713

INFO@STEMCELL.COM • TECHSUPPORT@STEMCELL.COM

FOR GLOBAL CONTACT DETAILS VISIT OUR WEBSITE

Document #29099 | Version 1_1_1

Description

Isolate highly purified lymphoid cells from fresh or previously frozen human peripheral blood mononuclear cells (PBMCs) by immunomagnetic positive selection.

- Fast and easy-to-use
- Up to 99.9% purity
- No columns required

This kit targets lymphoid cells for positive selection with antibodies recognizing the CD3 and CD19 cell surface markers. Desired cells are labeled with antibodies and magnetic particles, and separated without columns using an EasySep™ magnet. Unwanted cells are simply poured off, while desired cells remain in the tube. Isolated cells are immediately available for downstream applications such as flow cytometry, culture or DNA/RNA extraction.

Component Descriptions

COMPONENT NAME	COMPONENT #	QUANTITY	STORAGE	SHELF LIFE	FORMAT
EasySep™ HLA WB Lymphoid Positive Selection Cocktail	18684HC	3 x 1 mL	Store at 2 - 8°C. Do not freeze.	Stable until expiry date (EXP) on label.	A combination of monoclonal antibodies in PBS.
EasySep™ Magnetic Nanoparticles	18150H	3 x 1 mL	Store at 2 - 8°C. Do not freeze.	Stable until expiry date (EXP) on label.	A suspension of magnetic particles in water.
EasySep™ Red Blood Cell Lysis Buffer, 10X Concentrate	20110	10 mL	Store at 15 - 25°C. Do not freeze.	Stable until expiry date (EXP) on label.	A 10X concentrated red blood cell lysis reagent.

PBS - phosphate-buffered saline

Components may be shipped at room temperature (15 - 25°C) but should be stored as indicated above.

Additional Reagent Stability Information

REAGENT NAME	STORAGE	SHELF LIFE
EasySep™ Red Blood Cell Lysis Buffer (1X dilution)	Store at 2 - 8°C. Do not freeze.	Stable for up to 3 months. Do not exceed expiry date (EXP) of original component.

Sample Preparation

For available fresh and frozen samples, see www.stemcell.com/primarycells.

WHOLE BLOOD

Collect whole blood in a blood collection tube containing anticoagulant.

BUFFY COAT

1. Add an equal volume of recommended medium to whole blood.
2. Centrifuge at 200 x g for 10 minutes at room temperature (15 - 25°C) with the brake off.
3. Remove the concentrated leukocyte band (this is the buffy coat), plus a small portion of the plasma and concentrated red blood cells (RBCs). The target is to concentrate the leukocytes approximately 5-fold while maintaining the same hematocrit.
4. Transfer a maximum of 4.5 mL of buffy coat to the required tube (see Table 1).

Alternatively, HetaSep™ (Catalog #07906) red blood cell (RBC) sedimentation can be used to concentrate leukocytes. Please contact Technical Support for further information.


Recommended Medium

EasySep™ Buffer (Catalog #20144), RoboSep™ Buffer (Catalog #20104), or PBS containing 2% fetal bovine serum (FBS) and 1 mM EDTA. Medium should be free of Ca++ and Mg++.

Directions for Use – Manual EasySep™ Protocols

See page 1 for Sample Preparation and Recommended Medium. Refer to Table 1 for detailed instructions regarding the EasySep™ procedure for each magnet.

Table 1. EasySep™ HLA Whole Blood Lymphoid Positive Selection Kit Protocol

		EASYSEP™ MAGNET	
STEP	INSTRUCTIONS	“The Big Easy” (Catalog #18001)	
1	Prepare sample within the volume range.	Up to 4.5 mL	
	Add sample to required tube.	14 mL (17 x 100 mm) polystyrene round-bottom tube (e.g. Corning Catalog #352057)	
2	Add 1X EasySep™ RBC Lysis Buffer to sample.	Equal volume to sample	
3	Add Selection Cocktail to sample.	25 µL/mL of sample	
	Mix and incubate.	RT for 15 minutes	
4	Mix Magnetic Particles.	Pipette up and down more than 5 times	
5	Add Magnetic Particles to sample.	25 µL/mL of sample	
	Mix and incubate.	RT for 10 minutes	
6	Add recommended medium to top up the sample to the indicated volume. Mix by gently pipetting up and down 2 - 3 times.	<ul style="list-style-type: none"> • Top up to 5 mL for samples < 2.5 mL • Top up to 10 mL for samples ≥ 2.5 mL 	
	Place the tube (without lid) into the magnet and incubate.	RT for 10 minutes	
7	Pick up the magnet, and in one continuous motion invert the magnet and tube,* pouring off the supernatant. Remove the tube from the magnet; this tube contains the isolated cells.	Discard supernatant	
8	Add recommended medium to top up the sample to the indicated volume. Mix by gently pipetting up and down 2 - 3 times.	<ul style="list-style-type: none"> • Top up to 5 mL for samples < 2.5 mL • Top up to 10 mL for samples ≥ 2.5 mL 	
	Place the tube (without lid) into the magnet and incubate.	RT for 5 minutes	
9	Pick up the magnet, and in one continuous motion invert the magnet and tube,* pouring off the supernatant. Remove the tube from the magnet; this tube contains the isolated cells.	Discard supernatant	
10	Repeat steps as indicated	Steps 8 and 9 (for a total of 1 x 10-minute and 2 x 5-minute separations)	
11	Resuspend cells in desired medium. Be sure to collect cells from the sides of the tube.	Isolated cells are ready for use	


RT - room temperature (15 - 25°C)

* Leave the magnet and tube inverted for 2 - 3 seconds, then return upright. Do not shake or blot off any drops that may remain hanging from the mouth of the tube.

Directions for Use – Fully Automated RoboSep™ Protocol

See page 1 for Sample Preparation and Recommended Medium. Refer to Table 2 for detailed instructions regarding the RoboSep™ procedure.

Table 2. RoboSep™ HLA Whole Blood Lymphoid Positive Selection Kit Protocol

STEP	INSTRUCTIONS	RoboSep™ (Catalog #20000 and #21000)	
1	Prepare sample within the volume range.	0.25 - 4.5 mL	
	Add sample to required tube.	14 mL (17 x 100 mm) polystyrene round-bottom tube (e.g. Corning Catalog #352057)	
2	Add 1X EasySep™ RBC Lysis Buffer to sample.	Equal volume to sample	
3	Select protocol.	Human Lymphoid WB Positive Selection 18684HLA	
4	Mix Magnetic Particles	Pipette up and down more than 5 times	
5	Load the carousel.	Follow on-screen prompts	
	Start the protocol.	Press the green "Run" button	
6	Unload the carousel when the run is complete. Remove the tube containing the isolated cells and resuspend in desired medium. Be sure to collect cells from the sides of the tube.	Isolated cells are ready for use	

Notes and Tips

EASYSEPTM RED BLOOD CELL LYSIS BUFFER

EasySep™ Red Blood Cell Lysis Buffer is supplied as a 10X concentrate. Prepare 1X lysis buffer at least 1 hour before use by adding 1 part 10X lysis buffer to 9 parts distilled or Type 1 water. Mix gently and completely before use.

ASSESSING PURITY

The EasySep™ HLA WB Lymphoid Positive Selection Cocktail uses antibody clones known to block some anti-CD3 and anti-CD19 clones used to assess purity. For purity assessment of CD3+CD19+ cells by flow cytometry use the following fluorochrome-conjugated antibody clones:

- Anti-Human CD2 Antibody, Clone RPA-2.10 (Catalog #60007), and
- Anti-Human CD20 Antibody, Clone 2H7 (Catalog #60008)

The following method can also be used:

- Use a fluorochrome-conjugated secondary antibody, such as a FITC-labeled sheep anti-mouse IgG.

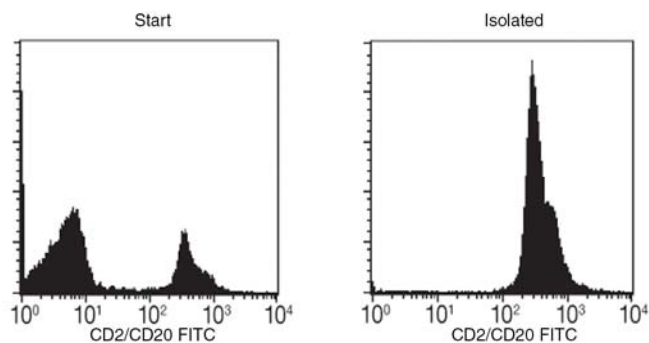
DONOR VARIABILITY

Certain donors express one or more soluble serum factors that can cause cross-linking with magnetic particles. This may result in visible aggregates in the enriched cell fraction following positive selection. These aggregates may appear as a distinct, high side-scatter population on FSC vs. SSC plots during flow cytometry analysis of the enriched fraction. This population consists solely of particles, with no cells or platelets present, as determined by staining with fluorescently-labeled antibodies against dextran, CD41, and CD45.

Potential aggregation can be avoided by washing away the donor plasma. Dilute the sample 2-fold in the recommended medium, and centrifuge at 300 x g for 10 minutes. Remove as much plasma as possible without disturbing the white and red blood cells, then resuspend the sample to the original volume with recommended medium before beginning the separation procedure.

If the samples have not been washed, any aggregates can be gated out during flow cytometry analysis of the enriched fraction based on their FSC vs. SSC characteristics, or by their lack of CD45 expression.

Data



Starting with fresh whole blood, the lymphoid content (CD3+CD19+) of the isolated fraction (as assessed by labeling with anti-CD2 and anti-CD20) typically ranges from 97.9 - 99.9%. In the above example, the purities of the start and final isolated fractions are 33.1% and 99%, respectively.

STEMCELL TECHNOLOGIES INC.'S QUALITY MANAGEMENT SYSTEM IS CERTIFIED TO ISO 13485. PRODUCTS ARE FOR RESEARCH USE ONLY AND NOT INTENDED FOR HUMAN OR ANIMAL DIAGNOSTIC OR THERAPEUTIC USES UNLESS OTHERWISE STATED.

Copyright © 2016 by STEMCELL Technologies Inc. All rights reserved including graphics and images. STEMCELL Technologies & Design, STEMCELL Shield Design, Scientists Helping Scientists, EasySep, HetaSep, and RoboSep are trademarks of STEMCELL Technologies Inc. All other trademarks are the property of their respective holders. While STEMCELL has made all reasonable efforts to ensure that the information provided by STEMCELL and its suppliers is correct, it makes no warranties or representations as to the accuracy or completeness of such information.