



Negative Selection
Catalog #19231

EasySep™ Human CD4+CD127low T Cell Pre- Enrichment Kit

For processing 1×10^9 cells



Scientists Helping Scientists™ | WWW.STEMCELL.COM

TOLL FREE PHONE 1 800 667 0322 • PHONE +1 604 877 0713

INFO@STEMCELL.COM • TECHSUPPORT@STEMCELL.COM

FOR GLOBAL CONTACT DETAILS VISIT OUR WEBSITE

Document #29148 | Version 1_2_2

Description

Isolate untouched pre-enriched CD4+CD127low T cells from fresh or previously frozen human peripheral blood mononuclear cells (PBMCs) by immunomagnetic negative selection.

- Fast, easy-to-use and column-free
- Up to 25% purity
- Isolated cells are untouched

This kit targets non-CD4+ T cells and CD127high cells for removal with antibodies recognizing specific cell surface markers. Unwanted cells are labeled with antibodies and magnetic particles, and separated without columns using an EasySep™ magnet. Desired cells are simply poured off into a new tube. Isolated cells are immediately available for downstream applications such as fluorescence-activated cell sorting.

Component Descriptions

COMPONENT NAME	COMPONENT #	QUANTITY	STORAGE	SHELF LIFE	FORMAT
EasySep™ Human CD4+CD127low T Cell Pre-Enrichment Cocktail	19231C.1	1 x 1 mL	Store at 2 - 8°C. Do not freeze.	Stable until expiry date (EXP) on label.	A combination of monoclonal antibodies in PBS.
EasySep™ Magnetic Nanoparticles	19150.1	2 x 1 mL	Store at 2 - 8°C. Do not freeze.	Stable until expiry date (EXP) on label.	A suspension of magnetic particles in water.

PBS - phosphate-buffered saline

Components may be shipped at room temperature (15 - 25°C) but should be stored as indicated above.

Sample Preparation

For available fresh and frozen samples, see www.stemcell.com/primarycells.

PERIPHERAL BLOOD

Prepare a PBMC suspension from whole blood by centrifugation over a density gradient medium (e.g. Lymphoprep™, Catalog #07801). For more rapid PBMC preparation, use the SepMate™ RUO (Catalog #86450/86415) or SepMate™ IVD* (Catalog #85450/85415) cell isolation tube.

If using previously frozen PBMCs, incubate the cells with DNase I Solution (Catalog #07900) at a concentration of 100 µg/mL at room temperature (15 - 25°C) for at least 15 minutes prior to labeling and separation. Filter aggregated suspensions through a 40 µm Cell Strainer (Catalog #27305) for optimal results.

After preparation, resuspend cells at 5×10^7 cells/mL in recommended medium.

* SepMate™ IVD is only available in select regions where it is registered as an In Vitro Diagnostic (IVD) device for the isolation of mononuclear cells (MNCs) from whole blood or bone marrow by density gradient centrifugation. In all other regions SepMate™ is available for research use only (RUO).



Recommended Medium

EasySep™ Buffer (Catalog #20144), RoboSep™ Buffer (Catalog #20104), or PBS containing 2% fetal bovine serum (FBS) and 1 mM EDTA. Medium should be free of Ca++ and Mg++.

Directions for Use – Manual EasySep™ Protocols

See page 1 for Sample Preparation and Recommended Medium. Refer to Table 1 for detailed instructions regarding the EasySep™ procedure for each magnet.

Table 1. EasySep™ Human CD4+CD127low T Cell Pre-Enrichment Kit Protocol

		EASYSEP™ MAGNETS	
STEP	INSTRUCTIONS	 EasySep™ (Catalog #18000)	“The Big Easy” (Catalog #18001) 
1	Prepare sample at the indicated cell concentration within the volume range.	5 x 10 ⁷ cells/mL 0.25 - 2 mL	5 x 10 ⁷ cells/mL 0.5 - 8.5 mL
	Add sample to required tube.	5 mL (12 x 75 mm) polystyrene round-bottom tube (e.g. Corning Catalog #352058)	14 mL (17 x 100 mm) polystyrene round-bottom tube (e.g. Corning Catalog #352057)
2	Add Pre-Enrichment Cocktail to sample.	50 µL/mL of sample	50 µL/mL of sample
	Mix and incubate.	RT for 15 minutes	RT for 15 minutes
3	Mix Magnetic Particles. NOTE: Particles should appear evenly dispersed.	Pipette up and down more than 5 times	Pipette up and down more than 5 times
4	Add Magnetic Particles to sample.	50 µL/mL* of sample	50 µL/mL* of sample
	Mix and incubate.	RT for 10 minutes	RT for 10 minutes
5	Add recommended medium to top up the sample to the indicated volume. Mix by gently pipetting up and down 2 - 3 times.	Top up to 2.5 mL	<ul style="list-style-type: none"> • Top up to 5 mL for samples < 2 mL • Top up to 10 mL for samples ≥ 2 mL
	Place the tube (without lid) into the magnet and incubate.	RT for 5 minutes	RT for 10 minutes
6	Pick up the magnet, and in one continuous motion invert the magnet and tube,** pouring the enriched cell suspension into a new tube.	Use new 5 mL tube	Use new 14 mL tube
7	Remove the tube from the magnet and place the new tube (without lid) into the magnet and incubate for a second separation.	RT for 5 minutes	RT for 10 minutes
8	Pick up the magnet, and in one continuous motion invert the magnet and tube,** pouring the enriched cell suspension into a new tube.	Isolated cells are ready for use	Isolated cells are ready for use

RT - room temperature (15 - 25°C)

* The purity of CD4+CD127lowCD25+ T cells can be increased by using 100 µL/mL of Magnetic Particles. The increased purity will result in reduced recovery.

** Leave the magnet and tube inverted for 2 - 3 seconds, then return upright. Do not shake or blot off any drops that may remain hanging from the mouth of the tube.

Directions for Use – Fully Automated RoboSep™ Protocol

See page 1 for Sample Preparation and Recommended Medium. Refer to Table 2 for detailed instructions regarding the RoboSep™ procedure.

Table 2. RoboSep™ Human CD4+CD127low T Cell Pre-Enrichment Kit Protocol

STEP	INSTRUCTIONS	RoboSep™ (Catalog #20000 and #21000)
1	Prepare sample at the indicated cell concentration within the volume range.	5 x 10 ⁷ cells/mL 0.5 - 8.5 mL
	Add sample to required tube.	14 mL (17 x 100 mm) polystyrene round-bottom tube (e.g. Corning Catalog #352057)
2	Select protocol.	Human CD4+CD127low T Cell Negative Selection 19231-high purity
3	Mix Magnetic Particles. NOTE: Particles should appear evenly dispersed.	Pipette up and down more than 5 times
4	Load the carousel.	Follow on-screen prompts
	Start the protocol.	Press the green "Run" button
5	Unload the carousel when the run is complete.	Isolated cells are ready for use

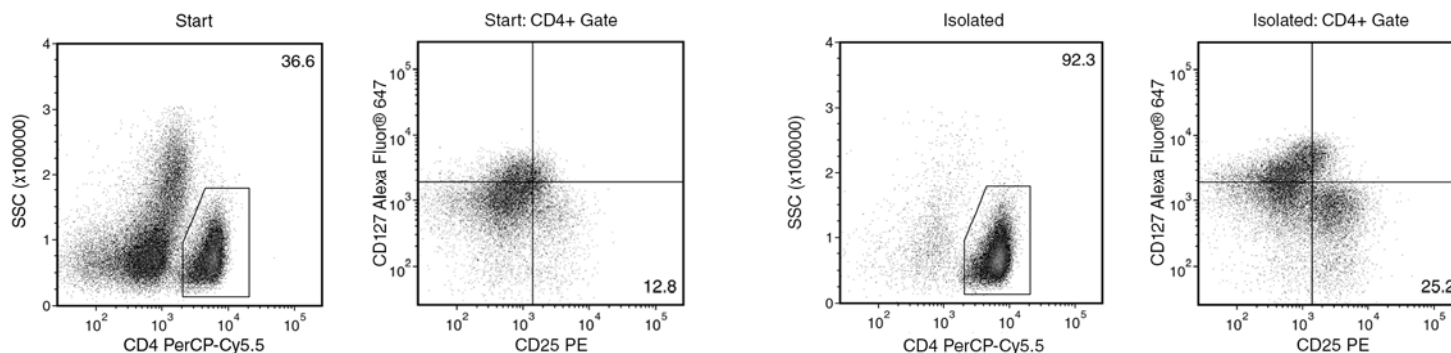
Notes and Tips

ASSESSING PURITY

For purity assessment of CD4+CD127low T cells by flow cytometry use the following fluorochrome-conjugated antibody clones:

- Anti-Human CD4 Antibody, Clone OKT4 (Catalog #60016), and
- Anti-human CD25 antibody, and
- Anti-human CD127 antibody, clone hIL-7R-M21

Data



Starting with human PBMCs, the T cell content (CD4+CD127lowCD25+) of the pre-enriched fraction typically ranges from 14.9 - 25.2%. In the above example, the purities of the start and final isolated fractions are 4.7% and 23.2%, respectively.

STEMCELL TECHNOLOGIES INC.'S QUALITY MANAGEMENT SYSTEM IS CERTIFIED TO ISO 13485. PRODUCTS ARE FOR RESEARCH USE ONLY AND NOT INTENDED FOR HUMAN OR ANIMAL DIAGNOSTIC OR THERAPEUTIC USES UNLESS OTHERWISE STATED.

Copyright © 2016 by STEMCELL Technologies Inc. All rights reserved including graphics and images. STEMCELL Technologies & Design, STEMCELL Shield Design, Scientists Helping Scientists, EasySep, RoboSep, and SepMate are trademarks of STEMCELL Technologies Canada Inc. Lymphoprep is a trademark of AXIS-SHIELD. All other trademarks are the property of their respective holders. While STEMCELL has made all reasonable efforts to ensure that the information provided by STEMCELL and its suppliers is correct, it makes no warranties or representations as to the accuracy or completeness of such information.