



EasySep™ Mouse APC Positive Selection Kit

Positive Selection

Catalog #18452

For processing 1×10^9 cells



Scientists Helping Scientists™ | WWW.STEMCELL.COM

TOLL FREE PHONE 1 800 667 0322 • PHONE +1 604 877 0713

INFO@STEMCELL.COM • TECHSUPPORT@STEMCELL.COM

FOR GLOBAL CONTACT DETAILS VISIT OUR WEBSITE

Document #DX20522 | Version 1_1_0

Description

Isolate highly purified cells labeled with APC (allophycocyanin)-conjugated antibodies from mouse splenocytes, bone marrow, or other single-cell suspensions by immunomagnetic positive selection.

- Fast and easy-to-use
- No columns required

This kit targets cells labeled with APC-conjugated antibodies (not provided) for positive selection. Desired cells are labeled with antibodies and magnetic particles, and separated without columns using an EasySep™ magnet. Unwanted cells are simply poured off, while desired cells remain in the tube. Isolated cells are immediately available for downstream applications such as flow cytometry, cell culture, or cell-based assays.

Component Descriptions

COMPONENT NAME	COMPONENT #	QUANTITY	STORAGE	SHELF LIFE	FORMAT
EasySep™ APC Selection Cocktail	18451C	1 x 1 mL	Store at 2 - 8°C. Do not freeze.	Stable until expiry date (EXP) on label.	A combination of monoclonal antibodies in PBS.
EasySep™ Magnetic Nanoparticles Positive Selection	18150	1 x 1 mL	Store at 2 - 8°C. Do not freeze.	Stable until expiry date (EXP) on label.	A suspension of magnetic particles in water.
EasySep™ Mouse FcR Blocker	18720	1 x 0.1 mL	Store at 2 - 8°C. Do not freeze.	Stable for 1 year from date of receipt.	A combination of monoclonal antibodies in PBS, 0.1% BSA, and 0.1% sodium azide.
RoboSep™ Vial	18550	1 vial	Not applicable	Not applicable	Not applicable

BSA - bovine serum albumin; PBS - phosphate-buffered saline

Components may be shipped at room temperature (15 - 25°C) but should be stored as indicated above.

Please refer to the Safety Data Sheet (SDS) for hazard information.

Sample Preparation

SPLEEN

Disrupt spleen in PBS or Hanks' Balanced Salt Solution containing 2% fetal bovine serum (FBS). Remove aggregates and debris by passing cell suspension through a 70 µm mesh nylon strainer. Centrifuge at 300 x g for 10 minutes and resuspend at 1×10^8 nucleated cells/mL in recommended medium.

Ammonium chloride treatment is not recommended when preparing the cells for separation.

BONE MARROW

Flush bone marrow cells from femur and tibia into recommended medium using a syringe equipped with a 23 gauge needle. Disperse aggregates by gently passing the cell suspension through the syringe several times. Alternatively, crush bones using a mortar and pestle. Remove remaining aggregates and debris by passing cell suspension through a 70 µm mesh nylon strainer. Centrifuge at 300 x g for 10 minutes and resuspend cells at 1×10^8 cells/mL in recommended medium.



Recommended Medium



EasySep™ Buffer (Catalog #20144), RoboSep™ Buffer (Catalog #20104), or PBS containing 2% FBS and 1 mM EDTA. Medium should be free of Ca^{++} and Mg^{++} .

Directions for Use – Manual EasySep™ Protocols

See page 1 for Sample Preparation and Recommended Medium. Refer to Table 1 for detailed instructions regarding the EasySep™ procedure for each magnet.

Table 1. EasySep™ Mouse APC Positive Selection Kit Protocol

		EASYSEP™ MAGNETS	
STEP	INSTRUCTIONS	 EasySep™ (Catalog #18000)	“The Big Easy” (Catalog #18001) 
1	Prepare sample at the indicated cell concentration within the volume range.	1 x 10 ⁸ cells/mL 0.1 - 2.5 mL NOTE: If starting with fewer than 1 x 10 ⁷ cells, resuspend cells in 0.1 mL. For samples with a starting frequency of desired cells < 2%, start with a concentration of 2 x 10 ⁸ cells/mL.	1 x 10 ⁸ cells/mL 0.25 - 8.5 mL NOTE: If starting with fewer than 2.5 x 10 ⁷ cells, resuspend cells in 0.25 mL. For samples with a starting frequency of desired cells < 2%, start with a concentration of 2 x 10 ⁸ cells/mL.
	Add sample to required tube.	5 mL (12 x 75 mm) polystyrene round-bottom tube (e.g. Catalog #38007)	14 mL (17 x 95 mm) polystyrene round-bottom tube (e.g. Catalog #38008)
2	Add FcR blocker to sample.	10 µL/mL of sample	10 µL/mL of sample
3	Add APC-conjugated antibody to sample.†	0.3 - 3 µg/mL of sample	0.3 - 3 µg/mL of sample
	Mix and incubate.	RT for 15 minutes	RT for 15 minutes
OPTIONAL WASH STEP may improve performance. Add recommended medium to top up the sample to the indicated volume and centrifuge. Resuspend sample in original volume.		Top up with 10-fold excess recommended medium and centrifuge. Carefully aspirate and discard supernatant. Resuspend in the same volume as step 1.	Top up with 10-fold excess recommended medium and centrifuge. Carefully aspirate and discard supernatant. Resuspend in the same volume as step 1.
4	Add Selection Cocktail to sample.	100 µL/mL of sample	100 µL/mL of sample
	Mix and incubate.	RT for 15 minutes	RT for 15 minutes
5	Mix Magnetic Particles. NOTE: Particles should appear evenly dispersed.	Pipette up and down more than 5 times	Pipette up and down more than 5 times
6	Add Magnetic Particles to sample.	50 µL/mL of sample	50 µL/mL of sample
	Mix and incubate.	RT for 10 minutes	RT for 10 minutes
7	Add recommended medium to top up the sample to the indicated volume. Mix by gently pipetting up and down 2 - 3 times.	Top up to 2.5 mL	<ul style="list-style-type: none"> Top up to 5 mL for samples < 1 mL Top up to 10 mL for samples ≥ 1 mL
	Place the tube (without lid) into the magnet and incubate.	RT for 5 minutes*	RT for 5 minutes*
8	Pick up the magnet, and in one continuous motion invert the magnet and tube,** pouring off the supernatant. Remove the tube from the magnet; this tube contains the isolated cells.	Discard supernatant	Discard supernatant
9	Repeat steps as indicated.	Steps 7 and 8, two more times (total of 3 x 5-minute separations)	Steps 7 and 8, two more times (total of 3 x 5-minute separations)
Continue on to next page.		Continue on to next page.	Continue on to next page.

		EASYSEP™ MAGNETS	
STEP	INSTRUCTIONS (CONTINUED)	 EasySep™ (Catalog #18000)	 “The Big Easy” (Catalog #18001)
OPTIONAL ADDITIONAL SEPARATION For samples with a starting frequency of desired cells < 15% NOTE: This will improve purity but may reduce recovery		Repeat steps 7 and 8, up to three more times (total of 4 - 6 x 5-minute separations)	Repeat steps 7 and 8, up to three more times (total of 4 - 6 x 5-minute separations)
10	Resuspend cells in desired medium. Be sure to collect cells from the sides of the tube.	Isolated cells are ready for use	Isolated cells are ready for use

RT - room temperature (15 - 25°C)

‡ Titrate APC-conjugated antibody for optimal purity and recovery.


* Recovery may be improved by increasing separation time in the magnet to 10 minutes for each round.

** Leave the magnet and tube inverted for 2 - 3 seconds, then return upright. Do not shake or blot off any drops that may remain hanging from the mouth of the tube.

Directions for Use – Fully Automated RoboSep™ Protocol

See page 1 for Sample Preparation and Recommended Medium. Refer to Table 2 for detailed instructions regarding the RoboSep™ procedure.

Table 2. RoboSep™ Mouse APC Positive Selection Kit Protocol

STEP	INSTRUCTIONS	RoboSep™ (Catalog #20000 and #21000)	
1	Prepare sample at the indicated cell concentration within the volume range.	1 x 10 ⁸ cells/mL 0.25 - 8 mL NOTE: If starting with fewer than 2.5 x 10 ⁷ cells, resuspend cells in 0.25 mL. For samples with a starting frequency of desired cells < 2%, start with a concentration of 2 x 10 ⁸ cells/mL.	
	Add sample to required tube.	14 mL (17 x 95 mm) polystyrene round-bottom tube (e.g. Catalog #38008)	
2	Add FcR blocker to sample.	10 µL/mL of sample	
3	Select protocol.	Mouse APC Positive Selection 18452-high purity	
4	Transfer APC-conjugated antibody to the RoboSep™ Vial provided.	Use of this vial is required for RoboSep™ to run properly	
5	Mix Magnetic Particles. NOTE: Particles should appear evenly dispersed.	Pipette up and down more than 5 times	
6	Load the carousel.	Follow on-screen prompts	
	Start the protocol.	Press the green "Run" button	
7	Unload the carousel when the run is complete. Remove the tube containing the isolated cells and resuspend in desired medium. Be sure to collect cells from the sides of the tube.	Isolated cells are ready for use	

Notes and Tips

OPTIMIZING PURITY

Purity can be increased, for some cell types, by decreasing the amount of EasySep™ APC Selection Cocktail added. This may decrease recovery but will also reduce side scatter during subsequent flow cytometry analysis.

OPTIMIZING RECOVERY

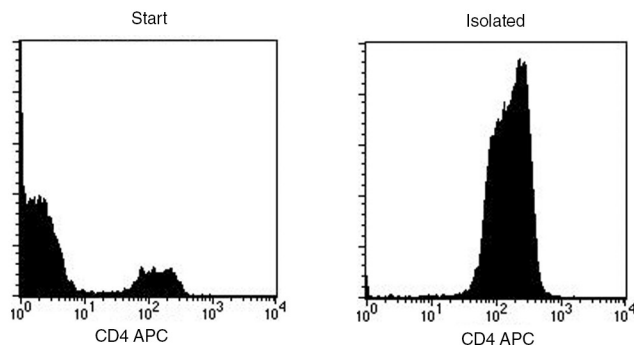
Recovery of positively selected APC-labeled cells is dependent on the quality of the APC-conjugated antibody used. Antibodies that have expired or that have been stored improperly may show lower affinity for the surface marker on the target cell, resulting in lower recovery.

It is important to add enough APC-conjugated antibody to ensure a significant fluorescence intensity of the target cells, as there is a strong correlation between fluorescence intensity and cell recovery. We recommend that the fluorescence intensity of the positively selected cells be at least 100-fold (2 logarithms) greater than that of the negative control for adequate recovery.

ASSESSING PURITY

The positively selected cells have already been APC-labeled, so the purity can be assessed directly by flow cytometry.

Data



Starting with mouse splenocytes, the purities of the start and final isolated fractions in the above example are 19.2% and 99.4% respectively, using an APC-conjugated anti-mouse CD4 antibody and EasySep™ Mouse APC Positive Selection Kit.

STEMCELL TECHNOLOGIES INC.'S QUALITY MANAGEMENT SYSTEM IS CERTIFIED TO ISO 13485. PRODUCTS ARE FOR RESEARCH USE ONLY AND NOT INTENDED FOR HUMAN OR ANIMAL DIAGNOSTIC OR THERAPEUTIC USES UNLESS OTHERWISE STATED.

Copyright © 2017 by STEMCELL Technologies Inc. All rights reserved including graphics and images. STEMCELL Technologies & Design, STEMCELL Shield Design, Scientists Helping Scientists, EasySep, and RoboSep are trademarks of STEMCELL Technologies Canada Inc. All other trademarks are the property of their respective holders. Users of this kit should ensure that they are entitled to use the antibody of interest. STEMCELL Technologies Inc. is not responsible for patent infringements or violations that may occur when using this product. While STEMCELL has made all reasonable efforts to ensure that the information provided by STEMCELL and its suppliers is correct, it makes no warranties or representations as to the accuracy or completeness of such information.