

## Cytokines

### Human Recombinant IGF-II



Scientists Helping Scientists™ | [WWW.STEMCELL.COM](http://WWW.STEMCELL.COM)

TOLL FREE PHONE 1 800 667 0322 • PHONE +1 604 877 0713

[INFO@STEMCELL.COM](mailto:INFO@STEMCELL.COM) • [TECHSUPPORT@STEMCELL.COM](mailto:TECHSUPPORT@STEMCELL.COM)

FOR GLOBAL CONTACT DETAILS VISIT OUR WEBSITE

#### Insulin-like growth factor 2

Catalog #	78023.1	10 µg
	78023	50 µg
	78023.2	1000 µg

## Product Description

Insulin-like growth factor 2 (IGF-II) is a polypeptide that belongs to the family of insulin-like growth factors that are similar in molecular structure to proinsulin. IGF-II binding to IGF-I receptor activates a signaling cascade via the MAPK and PI3K pathways. IGF-II affects growth, differentiation, and survival of cells in a variety of tissues during embryonic development. It stimulates proliferation and migration of primary lymphatic endothelial cells, and induces lymphangiogenesis (Guvakova).

## Product Information

Alternative Names:	Insulin-like growth factor type 2, Insulin-like growth factor II, Somatomedin A, T3M-11-derived growth factor
Accession Number:	P01344
Amino Acid Sequence:	AYRPSETLCG GELVDTLQFV CGDRGFYFSR PASRVSRRSR GIVEECCFRS CDLALLETYC ATPAKSE
Predicted Molecular Mass:	7.5 kDa
Species:	Human
Cross Reactivity:	Not determined
Formulation:	Lyophilized from a sterile filtered solution containing 0.1% trifluoroacetic acid.
Source:	E. coli

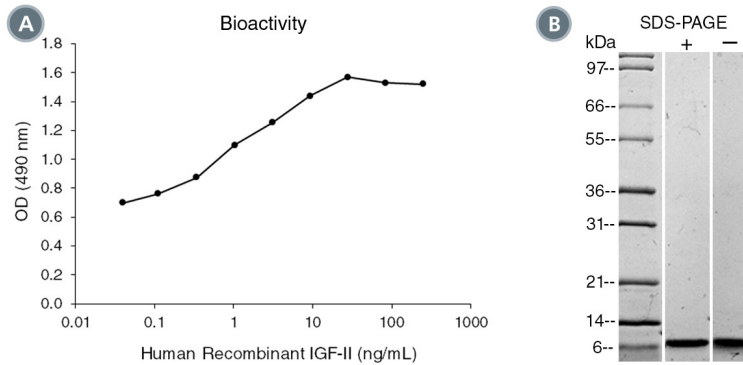
## Specifications

Activity:	The specific activity is $\geq 6.7 \times 10^4$ units/mg ( $EC_{50} \leq 0.015$ µg/mL) as determined by a cell proliferation assay using FDC-P1 cells.
Purity:	$\geq 95\%$
Endotoxin Level:	Measured by kinetic Limulus amoebocyte lysate (LAL) analysis and is $\leq 1$ EU/µg protein.

## Preparation and Storage

Storage:	Store at -20°C to -80°C.
Stability:	Stable as supplied for 12 months from date of receipt.
Preparation:	Centrifuge vial before opening. Resuspend the product in sterile water containing 0.1% bovine serum albumin (BSA) to at least 0.1 mg/mL by pipetting the solution down the sides of the vial. Do not vortex. Store at 2 - 8°C for up to 1 month or at -20°C to -80°C for up to 3 months. Avoid repeated freeze-thaw cycles. NOTE: If reconstituted product will be used immediately BSA is not required.

## Data



(A) The biological activity of Human Recombinant IGF-II was tested by its ability to promote the proliferation of FDC-P1 cells. Cell proliferation was measured after 48 hours of culture using a fluorometric assay method. The EC<sub>50</sub> is defined as the effective concentration of the growth factor at which cell proliferation is at 50% of maximum. The EC<sub>50</sub> in the above example is 1.1 - 1.6 ng/mL.

(B) 1 µg of Human Recombinant IGF-II was resolved with SDS-PAGE under reducing (+) and non-reducing (-) conditions and visualized by Coomassie Blue staining. Human Recombinant IGF-II has a predicted molecular mass of 7.5 kDa.

## Related Products

For a complete list of cytokines, as well as related products available from STEMCELL Technologies, please visit our website at [www.stemcell.com/cytokines](http://www.stemcell.com/cytokines) or contact us at [techsupport@stemcell.com](mailto:techsupport@stemcell.com).

## References

Guvakova MA. (2007) Insulin-like growth factors control cell migration in health and disease. *Int J Biochem Cell Biol* 39(5): 890–909.

STEMCELL TECHNOLOGIES INC.'S QUALITY MANAGEMENT SYSTEM IS CERTIFIED TO ISO 13485. PRODUCTS ARE FOR RESEARCH USE ONLY AND NOT INTENDED FOR HUMAN OR ANIMAL DIAGNOSTIC OR THERAPEUTIC USES UNLESS OTHERWISE STATED.

Copyright © 2017 by STEMCELL Technologies Inc. All rights reserved including graphics and images. STEMCELL Technologies & Design, STEMCELL Shield Design, and Scientists Helping Scientists are trademarks of STEMCELL Technologies Canada Inc. All other trademarks are the property of their respective holders. While STEMCELL has made all reasonable efforts to ensure that the information provided by STEMCELL and its suppliers is correct, it makes no warranties or representations as to the accuracy or completeness of such information.