

Anti-Human CD8a Antibody, Clone SK1, PE



Scientists Helping Scientists™ | WWW.STEMCELL.COM

TOLL FREE PHONE 1 800 667 0322 • PHONE +1 604 877 0713

INFO@STEMCELL.COM • TECHSUPPORT@STEMCELL.COM

FOR GLOBAL CONTACT DETAILS VISIT OUR WEBSITE

Antibodies

Mouse monoclonal IgG1 antibody
against human, rhesus, cynomolgus
CD8a, PE-conjugated

Catalog #60125PE
#60125PE.1

100 Tests 5 µL/test
25 Tests 5 µL/test

Product Description

The SK1 antibody reacts with CD8a, a 32 - 34 kDa type I transmembrane glycoprotein which is a subunit of CD8. CD8 is a disulfide bonded dimer, found either as a heterodimer of CD8a (α) and CD8b (β) subunits (i.e., $\alpha\beta$) or a homodimer ($\alpha\alpha$). CD8 acts as a co-receptor to the T cell receptor (TCR) during T cell activation by binding MHC class I molecules presented by an antigen-presenting cell. It functions to strengthen the association between the TCR and MHC I-antigen complex and to amplify signals from the TCR to the cytoplasm through the interaction of its intracellular domain with cytoplasmic tyrosine kinases such as Lck. The CD8a chain binds to the $\alpha 3$ domain of class I MHC molecules. CD8 is expressed by a majority of thymocytes, a subset of mature peripheral blood T cells (T cytotoxic cells), a proportion of β T cells, and at lower levels by NK cells (which predominantly express CD8a homodimers). Reportedly, the SK1 antibody exhibits a blocking effect on MHC:peptide tetramer binding to TCR and also blocks proliferation of Leu-2 T cells in mixed leukocyte reactions (MLR).

Target Antigen Name:	CD8a
Alternative Names:	Leu2, T8
Gene ID:	925
Species Reactivity:	Human, Rhesus, Cynomolgus, Chimpanzee, African green, Pigtailed macaque, Sooty mangabey
Host Species:	Mouse (BALB/c)
Clonality:	Monoclonal
Clone:	SK1
Isotype:	IgG1, kappa
Immunogen:	Human peripheral blood T lymphocytes
Conjugate:	PE

Applications

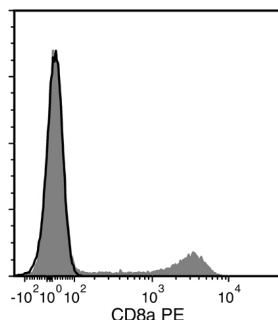
Verified:	FC
Reported:	FC

Abbreviations: CellSep: Cell separation; ChIP: Chromatin immunoprecipitation; FA: Functional assay; FC: Flow cytometry; ICC: Immunocytochemistry; IF: Immunofluorescence microscopy; IHC: Immunohistochemistry; IP: Immunoprecipitation; RIA: Radioimmunoassay; WB: Western blotting

Properties

Formulation:	Phosphate-buffered solution, pH 7.2, containing 0.09% sodium azide and 0.2% (w/v) bovine serum albumin
Purification:	The antibody was purified by affinity chromatography and conjugated with PE under optimal conditions. The solution is free of unconjugated PE and unconjugated antibody.
Stability and Storage:	Product stable at 2 - 8°C when stored undiluted. Do not freeze. Protect product from prolonged exposure to light. For product expiry date, please contact techsupport@stemcell.com .
Directions for Use:	For flow cytometry the suggested use of this antibody is 5 µL per 1×10^6 cells in 100 µL volume or per 100 µL of whole blood. It is recommended that the antibody be titrated for optimal performance for each application.

Data



Flow cytometry analysis of human peripheral blood mononuclear cells (PBMCs) labeled with Anti-Human CD8a Antibody, Clone SK1, PE (filled histogram) or Mouse IgG1, kappa Isotype Control Antibody, Clone MOPC-21, PE (Catalog #60070PE; solid line histogram).

Related Products

For a complete list of antibodies, including other conjugates, sizes and clones, as well as related products available from STEMCELL Technologies, please visit our website at www.stemcell.com/antibodies or contact us at techsupport@stemcell.com.

References

1. Masuda H et al. (2014) Vasculogenic conditioning of peripheral blood mononuclear cells promotes endothelial progenitor cell expansion and phenotype transition of anti-inflammatory macrophage and T lymphocyte to cells with regenerative potential. *J Am Heart Assoc* 3(3): e000743. (FC)
2. Koelsch KA et al. (2013) GFP affects human T cell activation and cytokine production following in vitro stimulation. *PLoS One* 8(4): e50068. (FC)
3. de Oliveira AL et al. (2013) Role of CD8+ T cells in triggering reversal reaction in HIV/leprosy patients. *Immunology* 140(1): 47–60. (FC, IF)
4. Campanelli R et al. (2002) Human CD8 co-receptor is strictly involved in MHC-peptide tetramer-TCR binding and T cell activation. *Int Immunol* 14(1): 39–44. (FA, FC)
5. Reichert T et al. (1991) Lymphocyte subset reference ranges in adult Caucasians. *Clin Immunol Immunopathol* 60(2): 190–208. (FC)
6. Engleman EG et al. (1981) Antibodies to membrane structures that distinguish suppressor/cytotoxic and helper T lymphocyte subpopulations block the mixed leukocyte reaction in man. *J Exp Med* 154(1): 193–8. (FA, FC, Isolation of T Cell Subsets using a panning technique)
7. Ledbetter JA et al. (1981) Evolutionary conservation of surface molecules that distinguish T lymphocyte helper/inducer and cytotoxic/suppressor subpopulations in mouse and man. *J Exp Med* 153(2): 310–23. (FC, IP)

STEMCELL TECHNOLOGIES INC.'S QUALITY MANAGEMENT SYSTEM IS CERTIFIED TO ISO 13485. PRODUCTS ARE FOR RESEARCH USE ONLY AND NOT INTENDED FOR HUMAN OR ANIMAL DIAGNOSTIC OR THERAPEUTIC USES UNLESS OTHERWISE STATED.

Copyright © 2016 by STEMCELL Technologies Inc. All rights reserved including graphics and images. STEMCELL Technologies & Design, STEMCELL Shield Design and Scientists Helping Scientists are trademarks of STEMCELL Technologies Inc. All other trademarks are the property of their respective holders. While STEMCELL has made all reasonable efforts to ensure that the information provided by STEMCELL and its suppliers is correct, it makes no warranties or representations as to the accuracy or completeness of such information.