

Anti-Human CD32 Antibody, Clone FLI8.26

Antibodies

Mouse monoclonal IgG2b antibody
against human, rhesus, cynomolgus
CD32, unconjugated



Scientists Helping Scientists™ | WWW.STEMCELL.COM

TOLL FREE PHONE 1 800 667 0322 • PHONE +1 604 877 0713

INFO@STEMCELL.COM • TECHSUPPORT@STEMCELL.COM

FOR GLOBAL CONTACT DETAILS VISIT OUR WEBSITE

Catalog #60135

100 µg 1 mg/mL

Product Description

The FLI8.26 antibody reacts with human CD32 (FcγRII), an ~40 kDa type 1 transmembrane glycoprotein that mediates several functions including phagocytosis, cytotoxicity, immunomodulation, and platelet aggregation. The FLI8.26 antibody cross-reacts with monocytes, granulocytes, and platelets. CD32 is encoded by three genes (A, B, C) and at least 6 isoforms are generated via alternative mRNA splicing, i.e., IIa1, IIa2, IIb1, IIb2, IIb3 and IIc. All isoforms are expressed by monocytes/macrophages, placental trophoblasts, and endothelial cells. In addition, the IIb isoform is expressed by B cells, and the IIa isoform by platelets, granulocytes and, weakly, by B cells. Isoform IIc is expressed by NK cells and neutrophils. Clone FLI8.26 is reactive with both FcγRIIIa and FcγRIIIb. CD32 binds weakly to the Fc region of monomeric IgG but more strongly to IgG aggregates and immune complexes. These interactions can result in non-specific labeling in antibody-based detection and cell separation experiments.

| | |
|----------------------|---|
| Target Antigen Name: | CD32 |
| Alternative Names: | FCR II, FcγRII |
| Gene ID: | 2212 |
| Species Reactivity: | Human, Rhesus, Cynomolgus, Baboon, Chimpanzee |
| Host Species: | Mouse (BALB/c) |
| Clonality: | Monoclonal |
| Clone: | FLI8.26 |
| Isotype: | IgG2b, kappa |
| Immunogen: | Human erythroleukemia cell line K562 |
| Conjugate: | Unconjugated |

Applications

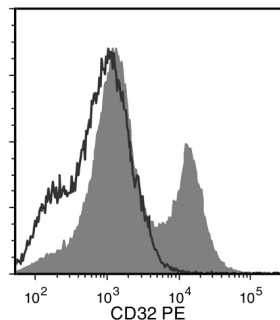
| | |
|-----------|----|
| Verified: | FC |
| Reported: | FC |

Abbreviations: CellSep: Cell separation; ChIP: Chromatin immunoprecipitation; FA: Functional assay; FC: Flow cytometry; ICC: Immunocytochemistry; IF: Immunofluorescence microscopy; IHC: Immunohistochemistry; IP: Immunoprecipitation; RIA: Radioimmunoassay; WB: Western blotting

Properties

| | |
|------------------------|---|
| Formulation: | Phosphate-buffered saline |
| Purification: | The antibody was purified by affinity chromatography. |
| Stability and Storage: | Product stable at 2 - 8°C when stored undiluted. Do not freeze. For product expiry date, please contact techsupport@stemcell.com . |
| Directions for Use: | For flow cytometry the suggested use of this antibody is ≤ 1 µg per 1 x 10 ⁶ cells in 100 µL volume. It is recommended that the antibody be titrated for optimal performance for each application. |

Data



Flow cytometry analysis of human peripheral blood mononuclear cells (PBMCs) labeled with Anti-Human CD32 Antibody, Clone FLI8.26, followed by a rat anti-mouse IgG2b antibody, PE (filled histogram), or Mouse IgG2b, kappa Isotype Control Antibody, Clone MPC-11 (Catalog #60072), followed by a rat anti-mouse IgG2b antibody, PE (solid line histogram).

Related Products

For a complete list of antibodies, including other conjugates, sizes and clones, as well as related products available from STEMCELL Technologies, please visit our website at www.stemcell.com/antibodies or contact us at techsupport@stemcell.com.

References

1. Bazzi S et al. (2015) Analysis of the immunomodulatory properties of two heat-killed mycobacterial preparations in a human whole blood model. *Immunobiology* 220(12): 1293–304.
2. van Royen-Kerkhof A et al. (2005) A novel human CD32 mAb blocks experimental immune haemolytic anaemia in FcγRIIA transgenic mice. *Br J Haematol* 130(1): 130–7. (FC)
3. Ierino FL et al. (1993) Mapping epitopes of human Fc gamma RII (CDw32) with monoclonal antibodies and recombinant receptors. *J Immunol* 150(5): 1794–803.

STEMCELL TECHNOLOGIES INC.'S QUALITY MANAGEMENT SYSTEM IS CERTIFIED TO ISO 13485. PRODUCTS ARE FOR RESEARCH USE ONLY AND NOT INTENDED FOR HUMAN OR ANIMAL DIAGNOSTIC OR THERAPEUTIC USES UNLESS OTHERWISE STATED.

Copyright © 2016 by STEMCELL Technologies Inc. All rights reserved including graphics and images. STEMCELL Technologies & Design, STEMCELL Shield Design and Scientists Helping Scientists are trademarks of STEMCELL Technologies Inc. All other trademarks are the property of their respective holders. While STEMCELL has made all reasonable efforts to ensure that the information provided by STEMCELL and its suppliers is correct, it makes no warranties or representations as to the accuracy or completeness of such information.