

**Anti-Human CD326 (EpCAM)  
Antibody, Clone 5E11.3.1, FITC**



Scientists Helping Scientists™ | [WWW.STEMCELL.COM](http://WWW.STEMCELL.COM)

TOLL FREE PHONE 1 800 667 0322 • PHONE +1 604 877 0713

[INFO@STEMCELL.COM](mailto:INFO@STEMCELL.COM) • [TECHSUPPORT@STEMCELL.COM](mailto:TECHSUPPORT@STEMCELL.COM)

FOR GLOBAL CONTACT DETAILS VISIT OUR WEBSITE

## Antibodies

Mouse monoclonal IgG1 antibody  
against human CD326 (EpCAM), FITC-  
conjugated

Catalog #60147FI

100 Tests    20 µL/test

## Product Description

The 5E11.3.1 antibody reacts with the human epithelial cell adhesion molecule (EpCAM or CD326), an ~40 kDa type I transmembrane glycoprotein, which functions as a homophilic and Ca<sup>++</sup>-independent adhesion molecule. This antibody shows positive labeling on luminal cells of normal human mammary epithelium. Weak labeling (or no labeling) is observed within the basal cell compartment of the mammary epithelium. The 5E11.3.1 antibody gives variable labeling on malignant breast epithelium. Positive labeling is observed on the following cell lines: MCF7, CAMA, T47D, BT10, BT20, COLO 205, and WIDR. Labeling is negative on human bone marrow cells, blood cells, lymphoid and mesenchymal tissues, and mammary and marrow fibroblast cultures. EpCAM has roles in several cellular processes, including signaling, migration, proliferation, and differentiation. It is expressed early during erythropoiesis and has been identified as a stem cell marker. The EpCAM protein is found on the basolateral membrane of most normal epithelial cells and is highly expressed in bone marrow, colon, and lung. EpCAM is not expressed on mesothelial cells or mesotheliomas, so it is widely used as a diagnostic marker to distinguish mesothelioma and carcinoma cells, and it also serves as a target for immunotherapeutic treatment of carcinomas.

Target Antigen Name:	CD326 (EpCAM)
Alternative Names:	EGP2, EpCAM, Epithelial cell adhesion molecule, ESA, TACSTD1, TROP-1
Gene ID:	4072
Species Reactivity:	Human
Host Species:	Mouse (BALB/c)
Clonality:	Monoclonal
Clone:	5E11.3.1
Isotype:	IgG1
Immunogen:	Human mammary carcinoma cell line T47D
Conjugate:	FITC (Fluorescein isothiocyanate)

## Applications

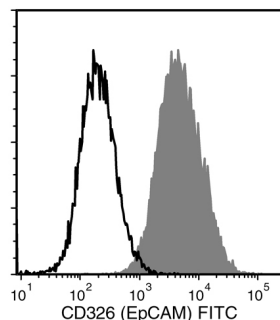
Verified:	FC
Reported:	FC

Abbreviations: CellSep: Cell separation; ChIP: Chromatin immunoprecipitation; FA: Functional assay; FACS: Fluorescence-activated cell sorting; FC: Flow cytometry; ICC: Immunocytochemistry; IF: Immunofluorescence microscopy; IHC: Immunohistochemistry; IP: Immunoprecipitation; RIA: Radioimmunoassay; WB: Western blotting

## Properties

Formulation:	Phosphate-buffered saline containing 0.1% bovine serum albumin and < 0.1% sodium azide
Purification:	The antibody was purified by affinity chromatography.
Stability and Storage:	Product stable at 2 - 8°C when stored undiluted. Do not freeze. Protect product from prolonged exposure to light. For product expiry date, please contact <a href="mailto:techsupport@stemcell.com">techsupport@stemcell.com</a> .
Directions for Use:	For flow cytometry, the suggested use of this antibody is 20 µL per 1 x 10 <sup>6</sup> cells in 100 µL. The antibody also works well on paraffin sections; however, a heat-induced antigen retrieval protocol is required for optimal staining of formalin-fixed paraffin-embedded tissues. It is recommended that the antibody be titrated for optimal performance for each application.

## Data



Flow cytometry analysis of human MCF7 cells labeled with Anti-Human CD326 (EpCAM) Antibody, Clone 5E11.3.1, FITC (filled histogram) or Mouse IgG1, kappa Isotype Control Antibody, Clone MOPC-21, FITC (Catalog #60070FI) (solid line histogram).

## Related Products

For a complete list of antibodies, including other conjugates, sizes and clones, as well as related products available from STEMCELL Technologies, please visit our website at [www.stemcell.com/antibodies](http://www.stemcell.com/antibodies) or contact us at [techsupport@stemcell.com](mailto:techsupport@stemcell.com).

## References

1. Aupet S et al. (2013) Isolation of viable human hepatic progenitors from adult livers is possible even after 48 hours of cold ischemia. *Tissue Eng Part C Methods* 19(7): 497–506. (IHC)
2. Kryczek I et al. (2009) Phenotype, distribution, generation, and functional and clinical relevance of Th17 cells in the human tumor environments. *Blood* 114(6): 1141–9. (FC, IHC)
3. Stingl J et al. (1998) Phenotypic and functional characterization in vitro of a multipotent epithelial cell present in the normal adult human breast. *Differentiation* 63(4): 201–13. (FC, IF, IHC)
4. Bardy P et al. (1997) Isolation and analysis of different subpopulations of normal human breast epithelial cells after their infection with a retroviral vector encoding a cell surface marker. *Breast Cancer Res Treat* 44(2): 153–65. (FC)

STEMCELL TECHNOLOGIES INC.'S QUALITY MANAGEMENT SYSTEM IS CERTIFIED TO ISO 13485. PRODUCTS ARE FOR RESEARCH USE ONLY AND NOT INTENDED FOR HUMAN OR ANIMAL DIAGNOSTIC OR THERAPEUTIC USES UNLESS OTHERWISE STATED.

Copyright © 2018 by STEMCELL Technologies Inc. All rights reserved including graphics and images. STEMCELL Technologies & Design, STEMCELL Shield Design, and Scientists Helping Scientists are trademarks of STEMCELL Technologies Canada Inc. All other trademarks are the property of their respective holders. While STEMCELL has made all reasonable efforts to ensure that the information provided by STEMCELL and its suppliers is correct, it makes no warranties or representations as to the accuracy or completeness of such information.