



Positive Selection
Catalog #18783

EasySep™ Mouse CD4+CD25+ Regulatory T Cell Isolation Kit II

For processing 1 x 10⁹ cells



Scientists Helping Scientists™ | WWW.STEMCELL.COM

TOLL FREE PHONE 1 800 667 0322 • PHONE +1 604 877 0713
INFO@STEMCELL.COM • TECHSUPPORT@STEMCELL.COM
FOR GLOBAL CONTACT DETAILS VISIT OUR WEBSITE

Document #DX20663 | Version 1_0_2

Description

Isolate CD4+CD25+ cells from mouse splenocytes or other single-cell suspensions using a simple, two-step procedure. When using single-cell suspensions from other tissue types, this kit may require optimization.

- Fast and easy-to-use
- Up to 90% purity
- No columns required

First, CD4+ T cells are pre-enriched using EasySep™ Mouse CD4+ T Cell Isolation Cocktail (19852C.1) with antibodies recognizing specific cell surface markers. Then, CD25+ are selected using EasySep™ Mouse CD25 Regulatory T Cell Positive Selection Cocktail (18782C), which contains antibodies recognizing CD25.

The EasySep™ cocktails label cells with antibodies that link to magnetic particles. The cells are separated without columns using an EasySep™ magnet. Isolated cells are immediately available for downstream applications such as flow cytometry, cell culture, or DNA/RNA extraction.

Component Descriptions

COMPONENT NAME	COMPONENT #	QUANTITY	STORAGE	SHELF LIFE	FORMAT
EasySep™ Mouse CD4+ T Cell Isolation Cocktail	19852C.1	1 x 0.5 mL	Store at 2 - 8°C. Do not freeze.	Stable until expiry date (EXP) on label.	A combination of monoclonal antibodies in PBS and 0.1% BSA.
EasySep™ Mouse CD25 Regulatory T Cell Positive Selection Cocktail	18782C	1 x 0.5 mL	Store at 2 - 8°C. Do not freeze.	Stable until expiry date (EXP) on label.	A combination of monoclonal antibodies in PBS, 0.1% BSA, and < 0.1% sodium azide.
EasySep™ PE Selection Cocktail	18151	1 x 1 mL	Store at 2 - 8°C. Do not freeze.	Stable until expiry date (EXP) on label.	A combination of monoclonal antibodies in PBS.
EasySep™ Streptavidin RapidSpheres™ 50001	50001	1 x 1 mL	Store at 2 - 8°C. Do not freeze.	Stable until expiry date (EXP) on label.	A suspension of magnetic particles in PBS.
EasySep™ Dextran RapidSpheres™ 50100	50100	1 x 1 mL	Store at 2 - 8°C. Do not freeze.	Stable until expiry date (EXP) on label.	A suspension of magnetic particles in water.
EasySep™ Mouse FcR Blocker	18731	1 x 0.5 mL	Store at 2 - 8°C. Do not freeze.	Stable until expiry date (EXP) on label.	A monoclonal antibody in PBS, 0.1% BSA, and < 0.1% sodium azide.
Normal Rat Serum	13551	1 x 2 mL	Store at -20°C.	Stable until expiry date (EXP) on label.	Mycoplasma-free normal rat serum.

BSA - bovine serum albumin; PBS - phosphate-buffered saline

Components may be shipped at room temperature (15 - 25°C) but should be stored as indicated above.

Additional Reagent Stability Information

REAGENT NAME	STORAGE	SHELF LIFE
Normal Rat Serum (in-use)	Store at 2 - 8°C.	Stable for at least 2 months. Do not exceed expiry date (EXP) on label.

Sample Preparation

SPLEEN

Disrupt spleen in PBS or Hanks' Balanced Salt Solution containing 2% fetal bovine serum (FBS). Remove aggregates and debris by passing cell suspension through a 70 µm mesh nylon strainer. Centrifuge at 300 x g for 10 minutes and resuspend at 1×10^8 nucleated cells/mL in recommended medium.

Ammonium chloride treatment is not recommended when preparing the cells for separation.



Recommended Medium



EasySep™ Buffer (Catalog #20144), RoboSep™ Buffer (Catalog #20104), or PBS containing 2% FBS and 1 mM EDTA. Medium should be free of Ca^{++} and Mg^{++} .

Directions for Use – Manual EasySep™ Protocols

See page 1 for Sample Preparation and Recommended Medium. Refer to Tables 1 and 2 for detailed instructions regarding the EasySep™ procedure for each magnet.

Table 1. EasySep™ Mouse CD4+CD25+ Regulatory T Cell Isolation Kit II Protocol



		EASYSEP™ MAGNETS	
STEP	INSTRUCTIONS	 EasySep™ (Catalog #18000)	 “The Big Easy” (Catalog #18001)
1	Prepare sample at the indicated cell concentration within the volume range.	1 x 10 ⁸ cells/mL 0.5 - 2 mL	1 x 10 ⁸ cells/mL 1 - 8 mL
2	Add Rat Serum to sample.	50 µL/mL of sample	50 µL/mL of sample
3	Add sample to required tube.	5 mL (12 x 75 mm) polystyrene round-bottom tube (e.g. Corning Catalog #352058)	14 mL (17 x 100 mm) polystyrene round-bottom tube (e.g. Corning Catalog #352057)
4	Add CD4+ T Cell Isolation Cocktail to sample.	50 µL/mL of sample	50 µL/mL of sample
	Mix and incubate.	RT for 10 minutes	RT for 10 minutes
5	Vortex Streptavidin RapidSpheres™. NOTE: Particles should appear evenly dispersed.	30 seconds	30 seconds
6	Add Streptavidin RapidSpheres™ to sample.	75 µL/mL of sample NOTE: Two different particles are provided in this kit. Ensure Streptavidin RapidSpheres™ are used in this step.	75 µL/mL of sample NOTE: Two different particles are provided in this kit. Ensure Streptavidin RapidSpheres™ are used in this step.
	Mix and incubate.	RT for 2.5 minutes	RT for 2.5 minutes
7	Add recommended medium to top up the sample to the indicated volume. Mix by gently pipetting up and down 2 - 3 times.	Top up to 2.5 mL	Top up to 5 mL for samples < 4 mL Top up to 10 mL for samples ≥ 4 mL
	Place the tube (without lid) into the magnet and incubate.	RT for 2.5 minutes	RT for 2.5 minutes
8	Pick up the magnet, and in one continuous motion invert the magnet and tube,* pouring the enriched cell suspension into a new tube.	Use a new 5 mL tube	Use a new 14 mL tube
9	Remove the tube from the magnet and place the new tube (without lid) into the magnet and incubate.	RT for 2.5 minutes	RT for 2.5 minutes
10	Pick up the magnet, and in one continuous motion invert the magnet and tube,* pouring the enriched cell suspension into a new tube.	Use a new 5 mL tube	Use a new 14 mL tube
11	Centrifuge pre-enriched cells.	200 x g for 10 minutes at RT	200 x g for 10 minutes at RT
	Discard the supernatant and resuspend cell pellet at the indicated volume.	Resuspend in 0.5 mL	Resuspend in 1 mL
Continue on to next page.		Continue on to next page.	Continue on to next page.

		EASYSEP™ MAGNETS	
STEP	INSTRUCTIONS(CONTINUED)	 EasySep™ (Catalog #18000)	 “The Big Easy” (Catalog #18001)
12	Add FcR blocker to sample.	50 µL/mL of sample	50 µL/mL of sample
	Mix and incubate.	RT for 5 minutes	RT for 5 minutes
13	Add CD25 Regulatory T Cell Positive Selection Cocktail to sample.	50 µL/mL of sample	50 µL/mL of sample
	Mix and incubate.	RT for 10 minutes	RT for 10 minutes
14	Add PE Selection Cocktail to sample.	20 µL/mL of sample	20 µL/mL of sample
	Mix and incubate.	RT for 5 minutes	RT for 5 minutes
15	Vortex Dextran RapidSpheres™. NOTE: Particles should appear evenly dispersed.	30 seconds	30 seconds
16	Add Dextran RapidSpheres™ to sample.	60 µL/mL of sample NOTE: Two different particles are provided in this kit. Ensure Dextran RapidSpheres™ are used in this step.	60 µL/mL of sample NOTE: Two different particles are provided in this kit. Ensure Dextran RapidSpheres™ are used in this step.
	Mix and incubate.	RT for 5 minutes	RT for 5 minutes
17	Add recommended medium to top up the sample to the indicated volume. Mix by gently pipetting up and down 2 - 3 times.	Top up to 2.5 mL	Top up to 5 mL for samples < 4 mL Top up to 10 mL for samples ≥ 4 mL
	Place the tube (without lid) into the magnet and incubate.	RT for 5 minutes	RT for 5 minutes
18	Pick up the magnet, and in one continuous motion invert the magnet and tube,* pouring off the supernatant.	Discard supernatant	Discard supernatant
19	Repeat steps as indicated.	Steps 17 and 18, three more times (total of 4 x 5-minute separations)	Steps 17 and 18, three more times (total of 4 x 5-minute separations)
20	Resuspend cells in desired medium. Be sure to collect cells from the sides of the tube.	Isolated cells are ready for use	Isolated cells are ready for use

RT - room temperature (15 - 25°C)

* Leave the magnet and tube inverted for 2 - 3 seconds, then return upright. Do not shake or blot off any drops that may remain hanging from the mouth of the tube.

Table 2. EasySep™ Mouse CD4+CD25+ Regulatory T Cell Isolation Kit II Protocol

		EASYSEP™ MAGNETS	
STEP	INSTRUCTIONS	EasyEights™ (Catalog #18103)	
		 5 mL tube	 14 mL tube
1	Prepare sample at the indicated cell concentration within the volume range.	1 x 10 ⁸ cells/mL 1 - 1.5 mL	1 x 10 ⁸ cells/mL 1.5 - 8 mL
2	Add Rat Serum to sample.	50 µL/mL of sample	50 µL/mL of sample
3	Add sample to required tube.	5 mL (12 x 75 mm) polystyrene round-bottom tube (e.g. Corning Catalog #352058)	14 mL (17 x 100 mm) polystyrene round-bottom tube (e.g. Corning Catalog #352057)
4	Add CD4+ T Cell Isolation Cocktail to sample.	50 µL/mL of sample	50 µL/mL of sample
	Mix and incubate.	RT for 10 minutes	RT for 10 minutes
5	Vortex Streptavidin RapidSpheres™. NOTE: Particles should appear evenly dispersed.	30 seconds	30 seconds
6	Add Streptavidin RapidSpheres™ to sample.	75 µL/mL of sample NOTE: Two different particles are provided in this kit. Ensure Streptavidin RapidSpheres™ are used in this step.	75 µL/mL of sample NOTE: Two different particles are provided in this kit. Ensure Streptavidin RapidSpheres™ are used in this step.
	Mix and incubate.	RT for 2.5 minutes	RT for 2.5 minutes
7	Add recommended medium to top up sample to the indicated volume. Mix by gently pipetting up and down 2 - 3 times.	Top up to 2.5 mL	Top up to 5 mL for samples < 4 mL Top up to 10 mL for samples ≥ 4 mL
	Place the tube (without lid) into the magnet and incubate.	RT for 5 minutes	RT for 5 minutes
8	Carefully pipette** (do not pour) the enriched cell suspension into a new tube.	Use a new 5 mL tube	Use a new 14 mL tube
9	Centrifuge pre-enriched cells.	200 x g for 10 minutes at RT	200 x g for 10 minutes at RT
	Discard the supernatant and resuspend cell pellet at the indicated volume.	Resuspend in 0.5 mL	Resuspend in 1 mL
10	Add FcR blocker to sample.	50 µL/mL of sample	50 µL/mL of sample
	Mix and incubate.	RT for 5 minutes	RT for 5 minutes
11	Add CD25 Regulatory T Cell Positive Selection Cocktail to sample.	50 µL/mL of sample	50 µL/mL of sample
	Mix and incubate.	RT for 10 minutes	RT for 10 minutes
12	Add PE Selection Cocktail to sample.	20 µL/mL of sample	20 µL/mL of sample
	Mix and incubate.	RT for 5 minutes	RT for 5 minutes
Continue on to next page.		Continue on to next page.	Continue on to next page.

STEP	INSTRUCTIONS (CONTINUED)	EasyEights™ (Catalog #18103)	
		5 mL tube	14 mL tube
13	Vortex Dextran RapidSpheres™. NOTE: Particles should appear evenly dispersed.	30 seconds	30 seconds
14	Add Dextran RapidSpheres™ to sample.	60 µL/mL of sample NOTE: Two different particles are provided in this kit. Ensure Dextran RapidSpheres™ are used in this step.	60 µL/mL of sample NOTE: Two different particles are provided in this kit. Ensure Dextran RapidSpheres™ are used in this step.
	Mix and incubate.	RT for 5 minutes	RT for 5 minutes
15	Add recommended medium to top up sample to the indicated volume. Mix by gently pipetting up and down 2 - 3 times.	Top up to 2.5 mL	Top up to 5 mL for samples < 4 mL Top up to 10 mL for samples ≥ 4 mL
	Place the tube (without lid) into the magnet and incubate.	RT for 15 minutes	RT for 15 minutes
16	Carefully pipette** (do not pour) off the supernatant. Remove the tube, containing the isolated cells, from the magnet.	Discard supernatant	Discard supernatant
17	Repeat steps as indicated.	Steps 15 and 16, two more times (total of 3 x 15-minute separations)	Steps 15 and 16, two more times (total of 3 x 15-minute separations)
18	Resuspend cells in desired medium. Be sure to collect cells from the sides of the tube.	Isolated cells are ready for use	Isolated cells are ready for use


RT - room temperature (15 - 25°C)

** Collect the entire supernatant, all at once, into a single pipette (e.g. for the EasyEights™ 5 mL tube use a 2 mL serological pipette and for the EasyEights™ 14 mL tube use a 10 mL serological pipette).

Directions for Use – Fully Automated RoboSep™ Protocol

See page 1 for Sample Preparation and Recommended Medium. Refer to Table 3 for detailed instructions regarding the RoboSep™ procedure.

Table 3. RoboSep™ Mouse CD4+CD25+ Regulatory T Cell Isolation Kit II Protocol

STEP	INSTRUCTIONS	RoboSep™ (Catalog #20000 and #21000)	
1	Prepare sample at the indicated cell concentration within the volume range.	1 x 10 ⁸ cells/mL 1 - 8 mL	
2	Add Rat Serum to sample.	50 µL/mL of sample	
3	Add sample to required tube.	14 mL (17 x 100 mm) polystyrene round-bottom tube (e.g. Corning Catalog #352057)	
4	Select protocol.	Mouse CD4+ T Cell Pre-Enrichment 18783 (19852)	
5	Vortex Streptavidin RapidSpheres™. NOTE: Particles should appear evenly dispersed.	30 seconds	
6	Load the carousel.	Follow on-screen prompts NOTE: Two different particles are provided in this kit. Ensure Streptavidin RapidSpheres™ are used in this step.	
	Start the protocol.	Press the green "Run" button	
7	Unload the carousel when the run is complete.	Remove the tube containing the isolated cells.	
8	Centrifuge the pre-enriched cells.	200 x g for 10 minutes at RT	
	Discard the supernatant and resuspend cell pellet at the indicated volume.	Resuspend in 1 mL	
9	Add sample to required tube.	14 mL (17 x 100 mm) polystyrene round-bottom tube (e.g. Corning Catalog #352057)	
10	Add FcR blocker to sample.	50 µL/mL of sample	
	Mix and incubate.	RT for 5 minutes	
11	Select protocol.	Mouse CD25 Regulatory T Cell Positive Selection 18783 (18782)	
12	Vortex Dextran RapidSpheres™. NOTE: Particles should appear evenly dispersed.	30 seconds	
13	Load the carousel.	Follow on-screen prompts NOTE: Two different particles are provided in this kit. Ensure Dextran RapidSpheres™ are used in this step.	
	Start the protocol.	Press the green "Run" button	
14	Unload the carousel when the run is complete. Remove the tube containing the isolated cells and resuspend in desired medium. Be sure to collect cells from the sides of the tube.	Isolated cells are ready for use	

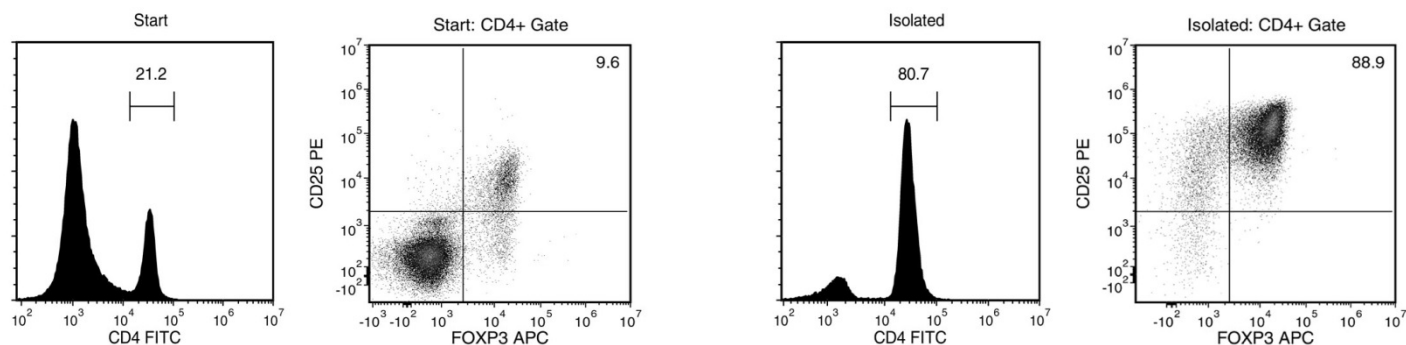
Notes and Tips

For purity assessment of CD4+CD25+ cells by flow cytometry use the following fluorochrome-conjugated antibody clones:

- Anti-Mouse CD4 Antibody, Clone RM4-4 (Catalog #60029), or
- Anti-Mouse CD4 Antibody, Clone RM4-5 (Catalog #60017), and
- Anti-mouse FOXP3 antibody, clone FJK-16s (optional)

NOTE: The CD25+ cells have already been PE-labeled.

Data



Starting with mouse splenocytes, the regulatory T cell content (CD4+CD25+FOXP3+) of the isolated fraction typically ranges from 70 - 93%. In the above example, the purities of the start and final isolated fractions are 2% and 72%, respectively.

STEMCELL TECHNOLOGIES INC.'S QUALITY MANAGEMENT SYSTEM IS CERTIFIED TO ISO 13485. PRODUCTS ARE FOR RESEARCH USE ONLY AND NOT INTENDED FOR HUMAN OR ANIMAL DIAGNOSTIC OR THERAPEUTIC USES UNLESS OTHERWISE STATED.

Copyright © 2017 by STEMCELL Technologies Inc. All rights reserved including graphics and images. STEMCELL Technologies & Design, STEMCELL Shield Design and Scientists Helping Scientists, EasyEights, EasySep, RapidSpheres, and RoboSep are trademarks of STEMCELL Technologies Canada Inc. All other trademarks are the property of their respective holders. While STEMCELL has made all reasonable efforts to ensure that the information provided by STEMCELL and its suppliers is correct, it makes no warranties or representations as to the accuracy or completeness of such information.